



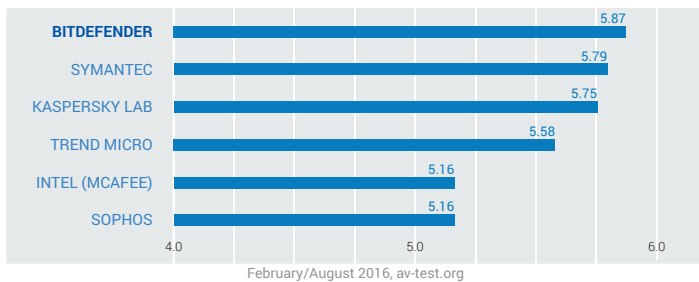
Bitdefender®

Security for MSPs

Integrated with LabTech

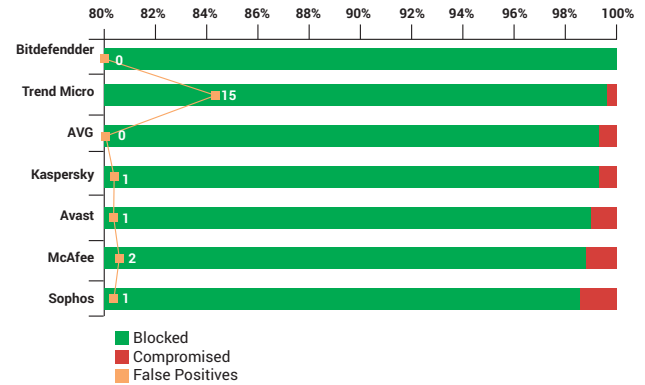
The #1 ranked antimalware security is now available for MSPs using LabTech with full integration into the LabTech console and simple pay-per-use monthly licensing.

Best Corporate Security in 2016
Highest average score for protection, performance, and usability



Real-World Protection Test

AV-Comparatives, August, 2016*



Stop Threats and Reduce Costs with the #1 Ranked Corporate Security

Security breaches are one of the best ways to lose customers. In addition, cleaning up after a malware incident costs you time and drives up your operating expense. Bitdefender consistently outperforms all other vendors in independent corporate solution tests demonstrating superior protection, performance, and usability.

Streamline Security Management with Full LabTech Integration

While many AV vendors tout integration into the LabTech console, Bitdefender is among the few solutions to be fully integrated. By using a single console for all security tasks you save time compared to the alternative which require you to also use a vendor console.

Simple Pay-per-use Licensing

Minimize operating expenses as well as the time spent provisioning accounts and managing licenses. With the Bitdefender dynamic monthly licensing, you are invoiced each month for the exact number of endpoints protected.

Comprehensive Product Line Up

When you become a Bitdefender partner, you gain access to Bitdefender's complete product line including Mobile Security and the most advanced set of virtualization (for VMware, Citrix, Hyper V) and cloud security solutions.

Easy to Deploy

With the click of a button on your LabTech console, Bitdefender will identify all endpoints at your customers sites and begin the install process which includes the removal of the old antivirus software.

The Support You Need

Bitdefender's Partner Program provides you with aggressive pricing, training, NFR software, along with marketing and sales support. We know you need a partner that you can count on, so we've installed a dedicated MSP HOTLINE giving you specialized phone support 24/7.

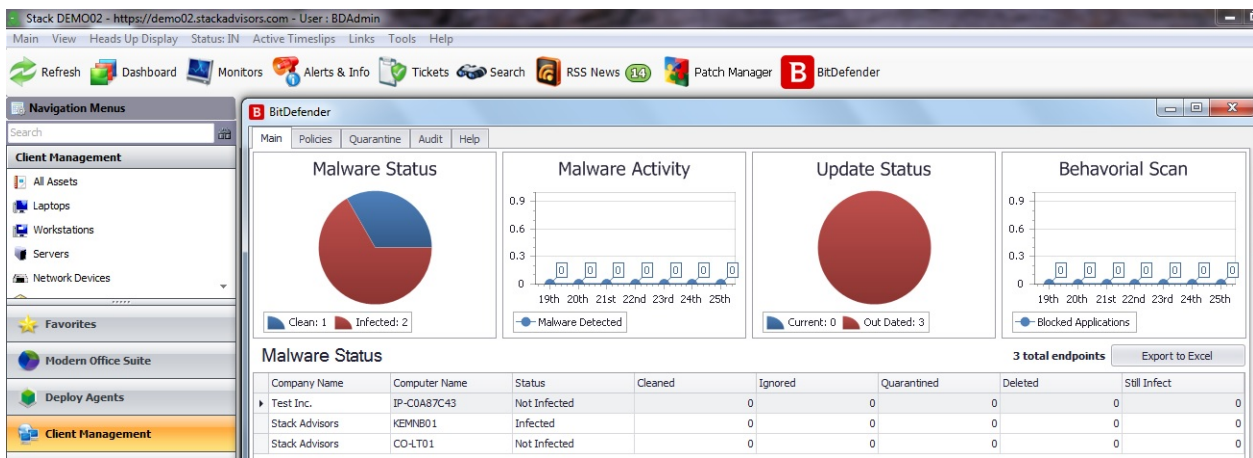
"We decided to work with Bitdefender for a number of reasons. The products easily integrate in our Microsoft environment, they detect unprotected endpoints and clean up malware instantly, and the centralized management makes our job very easy."

Rob Bosch, President, iPremise



FEATURES

- Bitdefender #1 ranked antivirus and antimalware
- Protection for Windows systems, both desktops and server endpoints
- Remote deployment simple uninstall of competitive solutions
- Monthly and yearly licenses available
- Granular policies, reports, and alerts
- Integrated with the LabTech console, both cloud and on-premise



SYSTEM REQUIREMENTS

LabTech Server Requirements

- Starting with LabTech 10
- On-premise or Cloud LabTech Installation
- Microsoft .NET Framework 3.5 (Full)
- Microsoft Internet Information Server (IIS) 7.0 or later
- Windows 2008 or later
- SQL Server 2008 or later
- 8 GB RAM

Endpoint Requirements

- LabTech agent
- Microsoft .NET Framework 3.5 (Full)
- Windows XP Service Pack 3 and later
- 1 GB RAM



For more information, contact us: (+1) 954-776-6262 X 245



Bitdefender delivers security technology in more than 100 countries through a cutting-edge network of value-added alliances, distributors and reseller partners. Since 2001, Bitdefender has consistently produced market-leading technologies for businesses and consumers and is one of the top security providers in virtualization and cloud technologies. Bitdefender has matched its award-winning technologies with sales alliances and partnerships and has strengthened its global market position through strategic alliances with some of the world's leading virtualization and cloud technology providers.

All Rights Reserved. © 2015 Bitdefender. All trademarks, trade names, and products referenced herein are property of their respective owners.
FOR MORE INFORMATION VISIT: enterprise.bitdefender.com