

# bitdefender® 9

Antispyware

User's guide



Antispyware

# BitDefender 9 Antispyware

## *User's guide*

### **SOFTWIN**

Published 2005.11.02  
Build 9.0.1

Copyright © 2005 SOFTWIN

#### **Legal Notice**

All rights reserved. No part of this book may be reproduced or transmitted in any form or by any means, electronic or mechanical, including photocopying, recording, or by any information storage and retrieval system, without written permission from SOFTWIN, except for the inclusion of brief quotations in reviews. The content can not be modified in any way.

**Warning and Disclaimer.** This product and its documentation are protected by copyright. The information in this document is provided on an "as is" basis, without warranty. Although every precaution has been taken in the preparation of this document, the authors will not have any liability to any person or entity with respect to any loss or damage caused or alleged to be caused directly or indirectly by the information contained in this work.

This book contains links to third-party Websites that are not under the control of SOFTWIN, and SOFTWIN is not responsible for the content of any linked site. If you access a third-party website mentioned in this guide, you will do so at your own risk. SOFTWIN provides these links only as a convenience, and the inclusion of the link does not imply that SOFTWIN endorses or accepts any responsibility for the content of those third-party sites.

**Trademarks.** Trademark names may appear in this book. All registered and unregistered trademarks in this document are the sole property of their respective owners.





# Table of Contents

<b>License and Warranty</b> .....	<b>ix</b>
<b>Preface</b> .....	<b>xiii</b>
1. Conventions used in this book .....	xiii
1.1. Typographical conventions .....	xiii
1.2. Admonitions .....	xiv
2. The book structure .....	xiv
3. Request for Comments .....	xv
<b>Product installation</b> .....	<b>1</b>
<b>1. BitDefender 9 Antispyware installation</b> .....	<b>3</b>
1.1. System requirements .....	3
1.2. Installation steps .....	3
1.3. Upgrade .....	6
1.4. Removing, repairing or modifying BitDefender features .....	6
<b>Description and features</b> .....	<b>9</b>
<b>2. Overview</b> .....	<b>11</b>
2.1. Why BitDefender? .....	11
2.2. Data Security Division .....	13
2.3. SOFTWIN .....	13
<b>3. BitDefender 9 Antispyware</b> .....	<b>15</b>
3.1. Antispyware .....	15
3.2. Other Features .....	15
<b>4. BitDefender modules</b> .....	<b>17</b>
4.1. General module .....	17
4.2. Antispyware module .....	17
4.3. Update module .....	17
<b>Management console</b> .....	<b>19</b>
<b>5. Overview</b> .....	<b>21</b>
5.1. System tray .....	22
5.2. Scan activity bar .....	23
<b>6. General module</b> .....	<b>25</b>

6.1. General information . . . . .	25
6.1.1. Firewall . . . . .	26
6.1.2. Automatic Update . . . . .	27
6.2. Product registration . . . . .	27
6.3. Management console settings . . . . .	29
6.4. Events . . . . .	32
6.5. About . . . . .	34
<b>7. Antispyware module . . . . .</b>	<b>37</b>
7.1. On-access scanning . . . . .	37
7.1.1. Files Control . . . . .	39
7.1.2. Dial Control . . . . .	41
7.1.3. Script Control . . . . .	45
7.1.4. Cookies Control . . . . .	48
7.1.5. Registry Control . . . . .	52
7.2. On-demand scanning . . . . .	54
7.2.1. Immediate scanning . . . . .	55
7.2.2. Contextual scanning . . . . .	62
7.2.3. Drag&Drop Scanning . . . . .	63
7.2.4. Scheduled scanning . . . . .	64
7.3. System Information . . . . .	75
7.4. Quarantine . . . . .	76
7.5. Report . . . . .	79
<b>8. Update module . . . . .</b>	<b>83</b>
8.1. Automatic update . . . . .	83
8.2. Update settings . . . . .	85
8.2.1. Update location settings . . . . .	86
8.2.2. Automatic update options . . . . .	87
8.2.3. Manual update type . . . . .	87
8.2.4. Interface options . . . . .	87
<b>Best practices . . . . .</b>	<b>89</b>
<b>9. Best practices . . . . .</b>	<b>91</b>
9.1. Antispyware . . . . .	91
<b>Getting help . . . . .</b>	<b>93</b>
<b>10. Support . . . . .</b>	<b>95</b>
10.1. Support department . . . . .	95
10.2. On-line help . . . . .	95
10.2.1. BitDefender Knowledge Base . . . . .	95
10.3. Contact information . . . . .	96
10.3.1. Web addresses . . . . .	96
10.3.2. Address . . . . .	97

<b>11. Frequently Asked Questions</b> .....	<b>99</b>
<b>Glossary</b> .....	<b>101</b>





# License and Warranty

This License Agreement is a legal agreement between you (either an individual or a single entity end user) and SOFTWIN for use of the SOFTWIN software product identified above, which includes computer software and may include associated media, printed materials, and "online" or electronic documentation ("BitDefender"), all of which are protected by U.S. and international copyright laws and international treaty protection. By installing, copying, or otherwise using BitDefender, you agree to be bound by the terms of this agreement. If you do not agree to the terms of this agreement, do not install or use BitDefender; you may, however, return it to your place of purchase for a full refund within 30 days after your purchase. Verification of your purchase may be required.

BitDefender is protected by copyright laws and international copyright treaties, as well as other intellectual property laws and treaties. BitDefender is licensed, not sold.

**GRANT OF LICENSE.** SOFTWIN hereby grants you and only you the following non-exclusive license to use BitDefender:

**APPLICATION SOFTWARE.** You may install and use one copy of BitDefender, or any prior version for the same operating system, on a single computer terminal. The primary user of the computer on which BitDefender is installed may make one additional (i.e. second) copy for his or her exclusive use on a portable computer.

**NETWORK USE.** You may also store or install a copy of BitDefender on a storage device, such as a network server, used only to install or run the BitDefender on your other computers over an internal network; however, you must purchase and dedicate a separate license for each separate computer terminal on which BitDefender is installed or run from the storage device. A license for BitDefender may not be shared or used concurrently on different computers or computer terminals. You should purchase a license pack if you require multiple licenses for use on multiple computers or computer terminals.

**LICENSE PACKS.** If you purchase a License Pack and you have acquired this License Agreement for multiple licenses of BitDefender, you may make the number of additional copies of the computer software portion of BitDefender specified above as

"Licensed copies." You are also entitled to make a corresponding number of secondary copies for portable computer use as specified above in the section entitled "Application Software".

**TERM OF LICENSE.** The license granted hereunder shall commence on the date that you install, copy or otherwise first use BitDefender and shall continue only on the computer on which it is initially installed.

**UPGRADES.** If BitDefender is labeled as an upgrade, you must be properly licensed to use a product identified by SOFTWIN as being eligible for the upgrade in order to use the BitDefender. An BitDefender labeled as an upgrade replaces and/or supplements the product that formed the basis for your eligibility for the upgrade. You may use the resulting upgraded product only in accordance with the terms of this License Agreement. If BitDefender is an upgrade of a component of a package of software programs that you licensed as a single product, BitDefender may be used and transferred only as part of that single product package and may not be separated for use on more than one computer.

**COPYRIGHT.** All right, title and interest in and to BitDefender and all copyright rights in and to BitDefender (including but not limited to any images, photographs, logos, animations, video, audio, music, text, and "applets" incorporated into BitDefender), the accompanying printed materials, and any copies of BitDefender are owned by SOFTWIN. BitDefender is protected by copyright laws and international treaty provisions. Therefore, you must treat BitDefender like any other copyrighted material except that you may install BitDefender on a single computer provided you keep the original solely for backup or archival purposes. You may not copy the printed materials accompanying BitDefender. You must produce and include all copyright notices in their original form for all copies created irrespective of the media or form in which BitDefender exists. You may not sub-license, rent, sell, or lease BitDefender. You may not reverse engineer, recompile, disassemble, create derivative works, modify, translate, or make any attempt to discover the source code for BitDefender.

**LIMITED WARRANTY.** SOFTWIN warrants that the media on which BitDefender is distributed is free from defects for a period of thirty days from the date of delivery of BitDefender to you. Your sole remedy for a breach of this warranty will be that SOFTWIN, at its option, may replace the defective media upon receipt of the damaged media, or refund the money you paid for BitDefender. SOFTWIN does not warrant that BitDefender will be uninterrupted or error free or that the errors will be corrected. SOFTWIN does not warrant that BitDefender will meet your requirements. SOFTWIN HEREBY DISCLAIMS ALL OTHER WARRANTIES FOR BITDEFENDER, WHETHER EXPRESSED OR IMPLIED. THE ABOVE WARRANTY IS EXCLUSIVE AND

IN LIEU OF ALL OTHER WARRANTIES, WHETHER EXPRESSED OR IMPLIED, INCLUDING THE IMPLIED WARRANTIES OF MERCHANTABILITY, FITNESS FOR A PARTICULAR PURPOSE, OR NON INFRINGEMENT. THIS WARRANTY GIVES YOU SPECIFIC LEGAL RIGHTS. YOU MAY HAVE OTHER RIGHTS, WHICH VARY FROM STATE TO STATE.

**DISCLAIMER OF DAMAGES.** Anyone using, testing, or evaluating BitDefender bears all risk to the quality and performance of BitDefender. In no event shall SOFTWIN be liable for any damages of any kind, including, without limitation, direct or indirect damages arising out of the use, performance, or delivery of BitDefender, even if SOFTWIN has been advised of the existence or possibility of such damages. SOME STATES DO NOT ALLOW THE LIMITATION OR EXCLUSION OF LIABILITY FOR INCIDENTAL OR CONSEQUENTIAL DAMAGES, SO THE ABOVE LIMITATION OR EXCLUSION MAY NOT APPLY TO YOU. IN NO CASE SHALL SOFTWIN'S LIABILITY EXCEED THE PURCHASE PRICE PAID BY YOU FOR BITDEFENDER. The disclaimers and limitations set forth above will apply regardless of whether you accept or use, evaluate, or test BitDefender.

**IMPORTANT NOTICE TO USERS.** THIS SOFTWARE IS NOT FAULT-TOLERANT AND IS NOT DESIGNED OR INTENDED FOR USE IN ANY HAZARDOUS ENVIRONMENT REQUIRING FAIL-SAFE PERFORMANCE OR OPERATION. THIS SOFTWARE IS NOT FOR USE IN THE OPERATION OF AIRCRAFT NAVIGATION, NUCLEAR FACILITIES, OR COMMUNICATION SYSTEMS, WEAPONS SYSTEMS, DIRECT OR INDIRECT LIFE-SUPPORT SYSTEMS, AIR TRAFFIC CONTROL, OR ANY APPLICATION OR INSTALLATION WHERE FAILURE COULD RESULT IN DEATH, SEVERE PHYSICAL INJURY OR PROPERTY DAMAGE.

**GOVERNMENT RESTRICTED RIGHTS/RESTRICTED RIGHTS LEGEND.** Use, duplication, or disclosure by the Government is subject to restrictions as set forth in subparagraph (c)(1)(ii) of the Rights in Technical Data and Computer Software clause at DFARS 252.227-7013 or subparagraphs (c)(1) and (2) of Commercial Computer Software-Restricted Rights clause at 48 CFR 52.227-19, as applicable. Contact SOFTWIN, at 5, F-ca de Glucoza str., 72322-Sect.2, Bucharest, Romania, or at Tel No: 40-21-2330780 or Fax:40-21-2330763.

**GENERAL.** This Agreement will be governed by the laws of Romania and by the international copyright regulations and treaties. This Agreement may only be modified by a license addendum, which accompanies this Agreement or by a written document which has been signed, by both you and SOFTWIN. This Agreement has been written in the English language only and is not to be translated or interpreted in any other language. Prices, costs and fees for use of BitDefender are subject to change without

prior notice to you. In the event of invalidity of any provision of this Agreement, the invalidity shall not affect the validity of the remaining portions of this Agreement. BitDefender and BitDefender logos are trademarks of SOFTWIN. Microsoft, Windows, Excel, Word, the Windows logo, Windows NT, Windows 2000 are registered trademarks of Microsoft Corporation. All other trademarks are the property of their respective owners.

# Preface

This guide is intended to all users who have chosen **BitDefender 9 Antispyware** as a security solution for their personal computers. The information presented in this book is suitable not only for computer literates, it is accessible to everyone who is able to work under Windows.

This book will describe for you **BitDefender 9 Antispyware**, the Company and the team who built it, will guide you through the installation process, will teach you how to configure it. You will find out how to use **BitDefender 9 Antispyware**, how to update, test and customize it. You will learn how to get best from BitDefender.

We wish you a pleasant and useful lecture.

## 1. Conventions used in this book

### 1.1. Typographical conventions

Several text styles are used in the book for an improved readability. Their aspect and meaning are presented in the table below.

Appearance	Description
sample syntax	Syntax samples are printed with monospaced characters.
<a href="http://www.bitdefender.com">http://www.bitdefender.com</a>	The URL links is pointing to some external location, on http or ftp servers.
<support@bitdefender.com>	E-mail messages are inserted in the text for contact information.

Appearance	Description
<code>"Preface" (p. xiii)</code>	This is an internal link, towards some location inside the document.
<code>filename</code>	File and directories are printed using monospaced font.
<code>option</code>	All the product options are printed using <b>strong</b> characters.
<code>sample code listing</code>	The code listing is printed with monospaced characters.

## 1.2. Admonitions

The admonitions are in-text notes, graphically marked, bringing to your attention additional information related to the current paragraph.



### Note

The note is just a short observation. Although you can omit it, the notes can provide valuable information, such as specific feature or a link to some related topic.



### Important

This requires your attention and is not recommended to skip over it. Usually, it provides non-critical but significant information.



### Warning

This is critical information you should treat with increased caution. Nothing bad will happen if you follow the indications. You should read and understand it, because it describes something extremely risky.

## 2. The book structure

The book consists of five parts, containing the major topics: Description and features, Installation, Management Console, Getting help and Best practices. Moreover, a glossary is provided to clarify some technical terms.

**Description and features.** A short introduction to BitDefender. It explains who BitDefender is, who SOFTWIN and Data Security Division are. **BitDefender 9 Antispyware**, its features and the product modules are presented to you.

**Installation.** Step by step instructions for installing BitDefender on a workstation. This is a comprehensive tutorial on installing **BitDefender 9 Antispyware**. Starting with the prerequisites for a successfully installation, you are guided through the whole installation process. Finally, the removing procedure is described in case you need to uninstall BitDefender.

**Management console.** Description of basic administration and maintenance of BitDefender. The chapters explain in detail all options of **BitDefender 9 Antispyware**, how to register the product, how to scan your computer and how to perform the updates.

**Getting help.** Where to look and where to ask for help if something goes unexpected appears. It includes a FAQ section too.

**Best practices.** Follow the steps described in here in order to ensure a computer free from viruses.

**Glossary.** The Glossary tries to explain some technical and uncommon terms you will find in the pages of this document.

## 3. Request for Comments

We invite you to help us improve the book. We have tested and verified all of the information to the best of our ability. Please write to tell us about any flaws you find in this book or how you think it could be improved, to help us provide you with the best documentation possible.

Let us know by sending an e-mail to <[documentation@bitdefender.com](mailto:documentation@bitdefender.com)>.





Product installation

# Product installation



Product installation

# 1. BitDefender 9 Antispyware installation

The **BitDefender 9 Antispyware installation** section of this user guide contains the following topics:

- System requirements
- Installation steps
- Upgrade
- Removing, repairing or modifying BitDefender features

## 1.1. System requirements

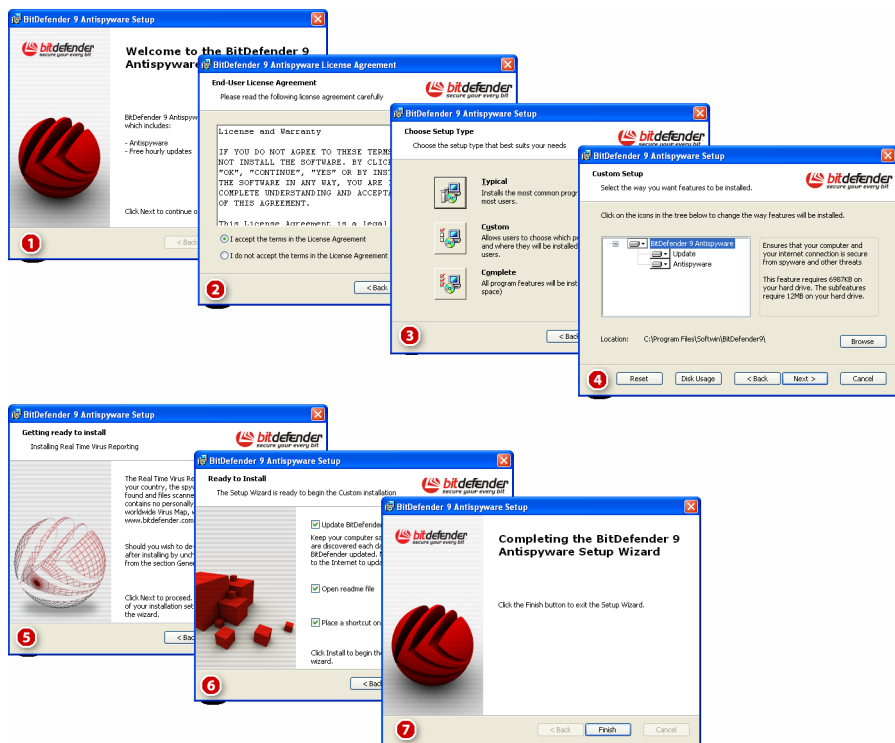
To ensure a proper functioning of the product, before installation, verify that the following system requirements are met:

- **Minimum Processor** - Pentium MMX 200 MHz
- **Minimum hard disk space** - 40MB
- **Minimum RAM Memory** - 64MB (128MB Recommended)
- **Operating system** - Windows 98/ME/2000/XP; Internet Explorer 5.5 (+)

## 1.2. Installation steps

Locate the setup file and double-click it. This will launch a wizard, which will guide you through the setup process:

Installation steps:



## Installation steps

1. Click **Next** to continue or click **Cancel** if you wish to quit installation.
2. Please read the License Agreement, select **I accept the terms in the License Agreement** and click **Next**. If you do not agree with these terms click **Cancel**. The installation process will be abandoned and you will exit setup.
3. You can choose what kind of installation you want: typical, custom or complete.
  - **Typical** - The program will be installed with the most common options. This is the recommended option for most users.
  - **Custom** - You may choose the components you want to install. Recommended for advanced users only.

- **Complete** - For full installation of the product. All BitDefender modules will be installed.

If you select **Typical** or **Complete** you will skip step 5

4. If you have selected **Custom**, a new window will appear containing all the BitDefender components listed so that you may select the ones you would like to install.

If you click any component name, a short description (including the minimum space required on the hard disk) will appear on the right side. If you click any component icon a window will appear where you can choose to install or not the selected module.

You can select the folder where you want to install the product. The default folder is C:\Program Files\Softwin\BitDefender 9.

If you want to select another folder, click **Browse** and in the window that will open, select the folder you wish BitDefender to be installed in. Click **Next**.

5. Click **Next**.
6. You have four options selected by default:
  - **Update BitDefender** - to update BitDefender at the end of the installation. Your system must be connected to the Internet to update.
  - **Open readme file** - to open the readme file at the end of the installation.
  - **Place a shortcut on the desktop** - to place a shortcut to BitDefender on your desktop at the end of the installation.

Click **Install** in order to begin the installation of the product.

7. Click **Finish** to complete the product installation. If you have accepted the default settings for the installation path, a new folder named Softwin is created in Program Files and it contains the subfolder BitDefender 9.



### Note

You may be asked to restart your system so that the setup wizard can complete the installation process.

## 1.3. Upgrade

The upgrade procedure can be done in one of the following ways:

- Install without removing the previous version - v8 to v9 only

Double-click the setup file and follow the wizard described in the "*Installation steps*" (p. 3) section.



### Important

During the installation process an error message caused by the Filespy service, will appear. Click **OK** to continue the installation.

- Uninstall your previous version and install the new one - for all BitDefender versions

First of all you have to remove your previously version, restart the computer and install the new one as described in the "*Installation steps*" (p. 3) section.



### Important

If you upgrade from v8 to v9 we recommend you to save [BitDefender settings](#). After the upgrading process is over you may load them.

## 1.4. Removing, repairing or modifying BitDefender features

If you want to modify, repair or remove **BitDefender 9 Antispyware**, follow the path from the Windows start menu: **Start -> Programs -> BitDefender 9 -> Modify, Repair or Uninstall**.

You will be requested to confirm your choice by clicking **Next**. A new window will appear where you can select:

- **Modify** - to select new program components to add or to select currently installed components to remove;
- **Repair** - to re-install all program components installed by the previous setup;



### Important

Before repairing the product we recommend you to save the [BitDefender settings](#). After the repairing process is over you may load them.

- **Remove** - to remove all installed components.

To continue setup, select one of the three options listed above. We recommend that you choose **Remove** for a clean re-installation. After the uninstall process is over, we recommend that you delete the Softwin folder from the Program Files.





# Description and features

Description and features

## 2. Overview

BitDefender provides security solutions to satisfy the protection requirements of today's computing environment, delivering effective threat management for over 41 million home and corporate users in more than 100 countries.

Designed to provide full protection for corporate network and systems, the BitDefender solution range comprises, beside antivirus protection, antispam, personal firewall and security management solutions. BitDefender also specializes in providing assistance with designing and establishing content security policies for corporate networks.

BitDefender Professional was the third product of its kind in the world to receive ICSA certification for Windows XP and the first to be awarded for groundbreaking innovation by the European Commission and Academies. BitDefender Antivirus is certified by all the major reviewers in the antivirus field - ICSA Labs, CheckMark, CheckVir, TÜV and Virus Bulletin.

BitDefender is headquartered in Bucharest, Romania and has offices in Tettngang, Germany, Barcelona, Spain and Florida, US. Website: <http://www.bitdefender.com>

### 2.1. Why BitDefender?

**Proven. Most reactive antivirus producer.** BitDefender fast reactivity in case of computer virus epidemic was confirmed beginning with the last outbreaks of CodeRed, Nimda and Sircam, as well as Badtrans.B or other dangerous, fast-spreading malicious codes. BitDefender was the first to provide antidotes against these codes and to make them freely available on the Internet for all affected people. Now, with the continuous expansion of the Klez virus - in various versions immediate antivirus protection has become once more a critical need for any computer system.

**Innovative. Awarded for innovation by the European Commission and EuroCase.** BitDefender has been proclaimed a winner of the European IST-Prize, awarded by the European Commission and by representatives of 18 academies in Europe. Now

in its eighth year, the European IST Prize is a reward for groundbreaking products that represent the best of European innovation in information technology.

**Comprehensive. Covers every single point of your network, providing complete security.** BitDefender security solutions for the corporate environment satisfy the protection requirements of today's business environment, enabling management of all complex threats that endanger a network, from a small local area to large multi-server, multi-platform WAN's.

**Your Ultimate Protection. The final frontier for any possible threat to your computer system.** As virus detection based on code analysis has not always offered good results, BitDefender has implemented behavior based protection, providing security against born-new malware.

These are **the costs** that organizations want to avoid and what the security products are designed to prevent:

- Worm attacks
- Communication loss because of infected e-mails
- E-mail breakdown
- Cleaning and recovering systems
- Lost productivity experienced by end users because systems are not available
- Hacking, and unauthorized access that causes damage

Some simultaneously **developments and benefits** can be accomplished by using the BitDefender security suite:

- Increase network availability by stopping the spread of malicious code attacks (i.e., Nimda, Trojan horses, DDoS).
- Protect remote users from attacks.
- Reduce administrative costs and deploys rapidly with BitDefender Enterprise management capabilities.
- Stop the spreading of malware through e-mail, using a BitDefender e-mail protection at the company's gateway. Temporarily or permanently block unauthorized, vulnerable, and expensive application connections.

## 2.2. Data Security Division

Ever since the beginning, SOFTWIN's Data Security Division approached data protection in a specific manner, with the first intelligent update, requiring no user intervention, the first remote antivirus management through WAP technology or the first Personal Firewall to be integrated within an antivirus engine to provide complete response to today's complex security threats.

Born to provide full data security at all critical levels in today's business environment, Data Security Division aims to ensure systems protection against computer viruses, to do antivirus research, to develop new technologies for monitoring all possible ways to infect a system and, last but not least, to educate the IT&C public on the danger of computer viruses.

BitDefender security solutions satisfy the protection requirements of today's business environment, enabling management of all complex threats that endanger a network, from a small local area to large multi-server, multi-platform WAN's.

## 2.3. SOFTWIN

Bucharest-based SOFTWIN is the leading provider of complex software solutions and services in Romania.

SOFTWIN focuses on providing software solutions and services that enable fast growing companies to solve critical business challenges and to capitalize on new business opportunities.

SOFTWIN enables companies to focus on their core business and expand to new markets, by outsourcing non-core activities.

SOFTWIN employs over 500 highly qualified professionals experienced in developing customized solutions and services.

Since its establishment in 1990, SOFTWIN's average annual revenue has increased by +30%.

SOFTWIN has 4 divisions, which also define the company's main business lines:

- CRM

- Business Information Solutions
- eContent Solutions
- Data Security Solutions

SOFTWIN provides services and solutions to customers worldwide. Over 90% of the company's turnover is achieved from exports to the US and European Union.

Using cutting edge technologies, SOFTWIN successfully developed over 500 software development projects, over 3,500 content structuring projects for international partners, having over 43 million data security solutions users in 80 countries worldwide and more than 1,500,000 client calls handled annually for CRM services.

## 3. BitDefender 9 Antispyware

### 3.1. Antispyware

Monitor and prevent potential spyware threats in real-time, before they can damage your system. By making use off a comprehensive database of spyware signatures, your computer will remain spyware-free.

**Real-Time Antispyware.** BitDefender monitors dozens of potential “hotspots” in your system where spyware might act, and also checks any changes made to your system and software. Known spyware threats are also blocked in real-time.

**Spyware scanning and cleaning.** BitDefender can scan your system, or part of it, for known spyware threats. The scan uses a constantly updated spyware signature database.

**Active Content Control.** Proactively blocks any potentially malicious application such as: ActiveX, Java Applets or Java Scripts type codes.

**Dial Control.** A configurable anti-dialer prevents malicious applications from running up a huge telephone bill at your expense.

**Cookie Control.** The firewall filters incoming and outgoing cookie type files, keeping your identity and preferences confidential when you're browsing the Internet.

### 3.2. Other Features

**Hourly Updates.** Your copy of BitDefender will be updated 24 times a day over the Internet, directly or through a Proxy Server. The product is able to repair itself if necessary, by downloading the damaged or missing files from BitDefender servers. BitDefender license owners benefit from free virus definition updates and free product upgrades.

**24/7 Support.** Offered online by qualified support representatives and an online database with answers to Frequently Asked Questions..

**Rescue Disk.** **BitDefender 9 Antispyware** is delivered on a bootable CD (based on LinuxDefender), which can be used to disinfect a system without booting it.



## 4. BitDefender modules

**BitDefender 9 Antispyware** contains the modules: **General**, **Antispyware** and **Update**.

### 4.1. General module

BitDefender comes fully configured for maximum security.

Essential status information about all the BitDefender modules is displayed in the [General](#) module. Here you can register your product and you can set the overall behavior of BitDefender.

### 4.2. Antispyware module

BitDefender monitors dozens of potential “hotspots” in your system where spyware might act, and also checks any changes made to your system and software. Known spyware threats are also blocked in real-time. It is effective in blocking Trojan horses and other tools installed by hackers, who try to compromise your privacy and send your personal information, like credit card numbers, from your computer to the hacker.

BitDefender can also scan your system, or part of it, for known spyware threats. The scan uses a constantly updated spyware signature database.

### 4.3. Update module

New spywares are found and identified every day. This is why it is very important to keep BitDefender up to date with the latest spyware signatures. By default, BitDefender automatically checks for updates every hour.

Updates come in the following ways:

- **Updates for the antispware engines** - new spyware signatures will be added to the database. This update type is also known as **Antispware Update**.
- **Product upgrades** - when a new product version is released, new features and scan techniques are introduced to the effect of improving the product's performance. This update type is also known as **Product Update**.

Moreover, from the user's intervention viewpoint, we may take into account:

- **Automatic update** - the antivirus automatically contacts the BitDefender server in order to check if an update was released. If so, BitDefender is updated automatically. The automatic update can also be done anytime you want by clicking **Update now** from the **Update** module.

Management console

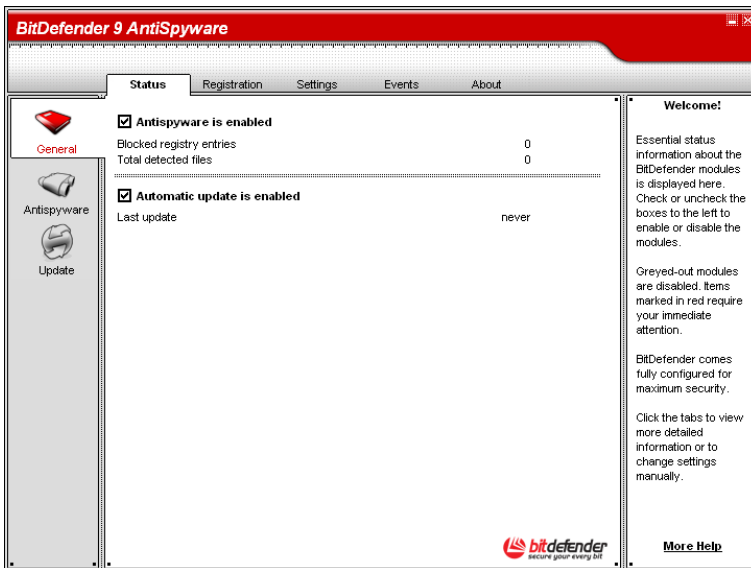
# Management console

Management console

## 5. Overview

**BitDefender 9 Antispyware** was designed with a centralized management console, which allows the configuration of the protection options for all BitDefender modules. In other words, it is enough to open the management console in order to have access to all modules: **Antispyware** and **Update**.

To access the management console, use the Windows Start menu, by following the path **Start -> Programs -> BitDefender 9 -> BitDefender 9 Antispyware** or quicker, double click the **BitDefender icon** from the system tray.



Management console

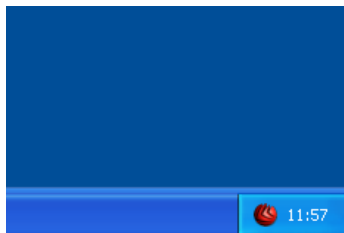
On the left side of the management console you can see the module selector:

- **General** - in this section you can see a summary of all the BitDefender main settings, product details and contact information. Here you can also register the product.
- **Antispyware** - in this section you can configure the **Antispyware** module.
- **Update** - in this section you can configure the **Update** module.

On the right side of the management console you can see information regarding the section you are into. The **More Help** option, placed at the right bottom, opens the **Help** file.

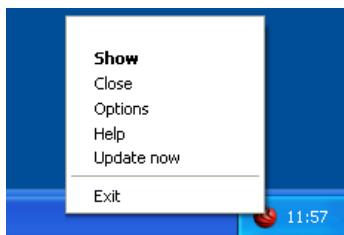
## 5.1. System tray

When the console is minimized, an icon will appear in the system tray:



If you double-click this icon, the management console will open.

### System tray



Also, by right-clicking it, a contextual menu containing the following options, will appear.

### Contextual menu

- **Show** - opens the management console.
- **Close** - minimizes the management console to system tray.
- **Options** - opens the **Settings** section of the management console.
- **Help** - opens the help file.
- **Update now** - performs an **immediate update**.

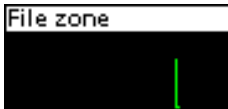
- **Exit** - shuts down the application. By selecting this option, the icon from the system tray will disappear and in order to access the management console, you will have to launch it again from the Windows Start menu.

**Note**

- The icon will turn into black, if you disable one or more of the BitDefender modules. This way you will know if some modules are disabled without opening the management console.
- The icon will blink when an update is available.

## 5.2. Scan activity bar

The **Scan activity bar** is a graphic visualization of the scanning activity on your system



The green bars (the **File Zone**) show the number of scanned files per second, on a scale from 0 to 50.

Activity bar

**Note**

The **Scan activity bar** will notify you when the Spyware Shield is disabled with a red cross over the corresponding area (**File Zone**). This way you will know if you are protected without opening the management console.

When you no longer want to see the graphic visualization, just right-click it and select **Hide**.

**Note**

To completely hide this window, clear **Show Scan Activity Bar** option (from the **General** module, [Settings](#) section).





## 6. General module

The **General** section of this user guide contains the following topics:

- General information
- Product registration
- Management console settings
- Events
- About

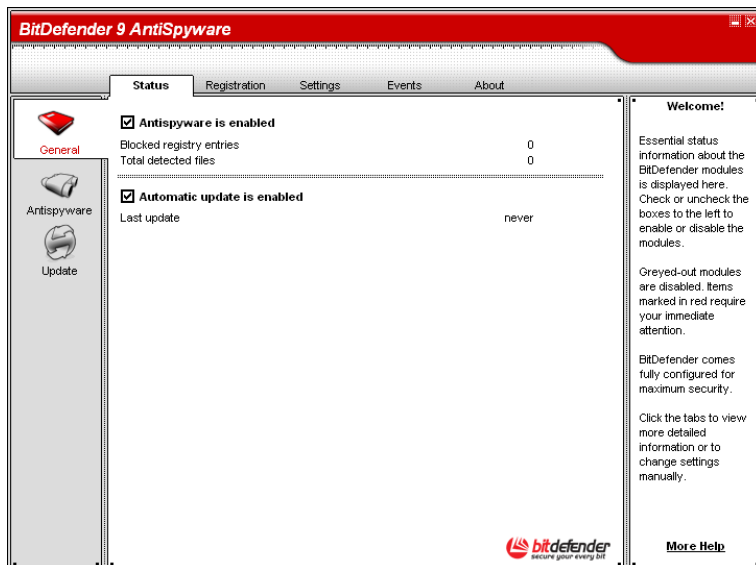


### Note

For more details regarding the **General** module check the description of the *“General module”* (p. 17).

### 6.1. General information

To access this section click **Status** tab from the **General** module.



### General information

In this section you can review information regarding the product status.

To enable/disable the main BitDefender features select/clear the check boxes corresponding to them.



### Warning

Items marked in red require your immediate attention.

## 6.1.1. Firewall

The **Antispyware** monitors dozens of potential “hotspots” in your system where spyware might act, and also checks any changes made to your system and software. The figures shown represent the scanned objects during this session.

**Note**

To be protected against Spyware keep the **Antispyware** enabled.

## 6.1.2. Automatic Update

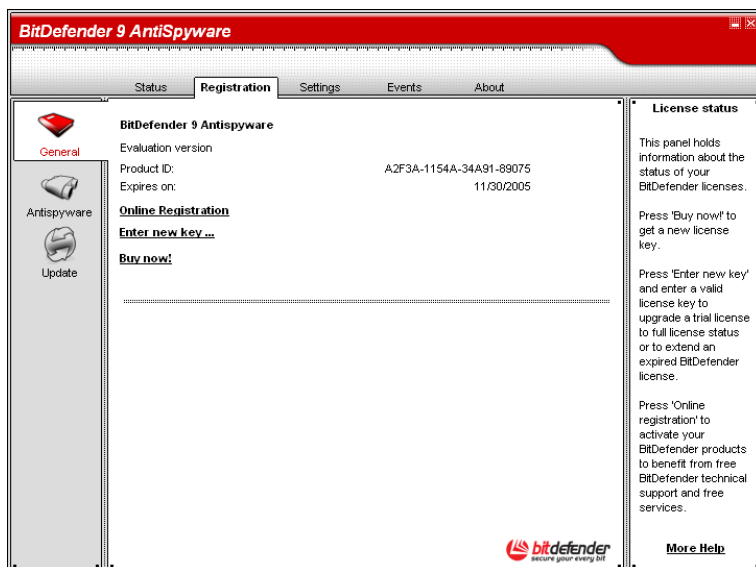
New spywares are found and identified every day. This is why it is very important to keep BitDefender up to date with the latest spyware signatures. It displays the date of the last [update](#).

**Note**

To protect your critical data, BitDefender can perform automatic updates. Keep the **Automatic update** option enabled.

## 6.2. Product registration

To access this section click **Register** tab from the **General** module.



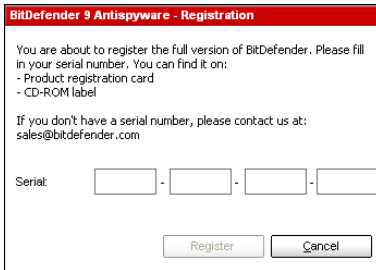
### Product registration

This section contains information about the status of your BitDefender license. Here you can register the product and you can see the expiring date.

The product is delivered with a trial registration key valid for thirty days. At the end of the trial period, if you want to purchase the product you have to provide a new license key. Click **Buy now** to get a new **License Key** from the BitDefender online store.

Click **Online registration** to activate your BitDefender product in order to benefit from free BitDefender technical support and other services.

To modify the default license key click **Enter new key**. The following window will open:



The screenshot shows a registration dialog box titled "BitDefender 9 Antispyware - Registration". The text inside reads: "You are about to register the full version of BitDefender. Please fill in your serial number. You can find it on: - Product registration card - CD-ROM label". Below this, it says: "If you don't have a serial number, please contact us at: sales@bitdefender.com". There is a "Serial:" label followed by four empty input boxes separated by hyphens. At the bottom, there are two buttons: "Register" and "Cancel".

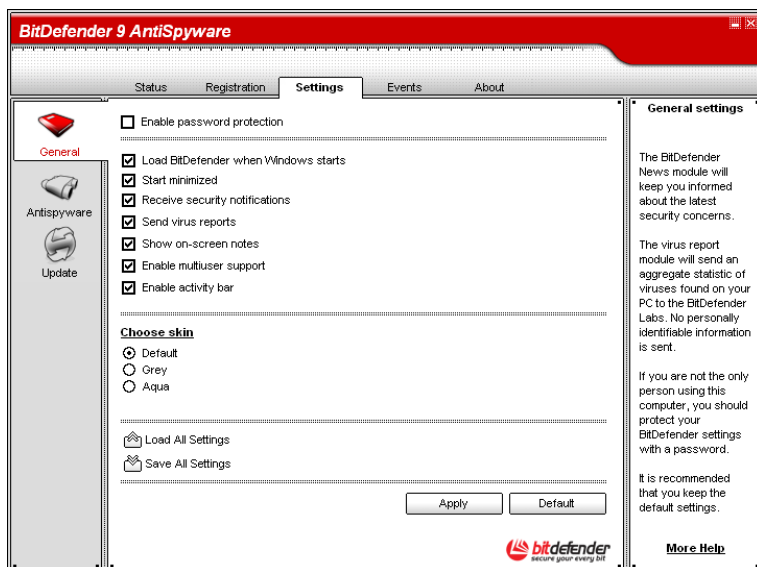
### Enter registration key

If you type in a valid license key a success message box appears.

In the **Registration** section now, you can see the expiring date of the new license key.

## 6.3. Management console settings

To access this section click **Settings** tab from the **General** module.



### Management console settings

Here you can set the overall behavior of BitDefender. By default, BitDefender is loaded at Windows startup and then runs minimized in the taskbar.

The following options are available:

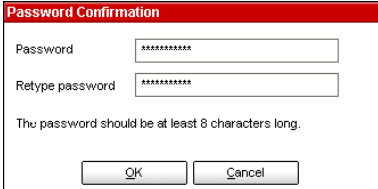
- **Enable password protection** - enables setting a password in order to protect the BitDefender Management Console configuration;

#### Note



If you are not the only person using this computer, it is recommended that you protect your BitDefender settings with a password.

If you select this option, the next window will appear:



**Password Confirmation**

Password

Retype password

The password should be at least 8 characters long.

Type in the password in the **Password** field, re-type it in the **Retype password** field and click **OK**.

### Enter password

From now on, if you want to change the BitDefender configuration options, you will be asked to introduce the password.



### Important

If you forgot the password you will have to repair the product in order to modify the BitDefender configuration.

- **Load BitDefender when Windows starts** - automatically launches BitDefender at system startup.



### Note

We recommend you to keep this option selected.

- **Start minimized** - minimizes the BitDefender management console after it has been loaded at system startup. Only the **BitDefender Icon** will appear in the system tray.
- **Receive security notifications** - receives from time to time security notifications regarding virus outbreaks, sent by the BitDefender server.
- **Send virus reports** - sends to the BitDefender Labs reports regarding viruses identified in your computer. It helps us keep track of virus-outbreaks.

The reports will contain no confidential data, such as your name, IP address or others, and will not be used for commercial purposes. The information supplied will contain only the virus name and will be used solely to create statistic reports.



- **Show on-screen notes** - shows pop-up windows regarding the product status.

- **Enable multiuser support** - allows other users that may be using this computer to have their own settings for BitDefender.

**Note**

This option can only be enabled or disabled by users with administrator rights on the local machine.

- **Enable activity bar** - enables/disables the “ *Scan activity bar* ” (p. 23).
- **Choose skin** - allows you to select the color of the management console. The skin represents the background image on the interface. In order to select a different skin, click the corresponding color.

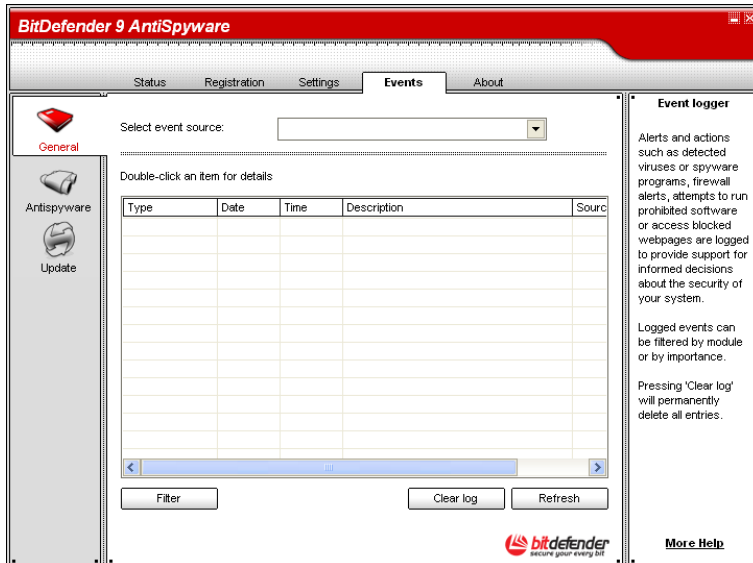
Use the  **Save All Settings** /  **Load All Settings** buttons to save / load the settings you have made for BitDefender to a desired location. This way you can use the same settings after you reinstall or repair your BitDefender product.

Click **Apply** to save the changes. If you click **Default** you will load the default settings.

## 6.4. Events

To access this section click **Events** tab from the **General** module.





## Events

In this section all the events generated by BitDefender are displayed.

There are 3 types of events:  **Information**,  **Warning** and  **Critical**.

Examples of events:

- **Information** - when an e-mail was scanned;
- **Warning** - when a suspected file was detected;
- **Critical** - when an infected file was detected.

For each event the following information are offered: the date and the time when the event occurred, a small description and its source (**Antivirus** or **Update**). Double-click an event to see its properties.

You can filter these events in 2 ways (by type or by source):

- Click **Filter** to select what types of event to display;
- Select the event source from the drop-down men.;

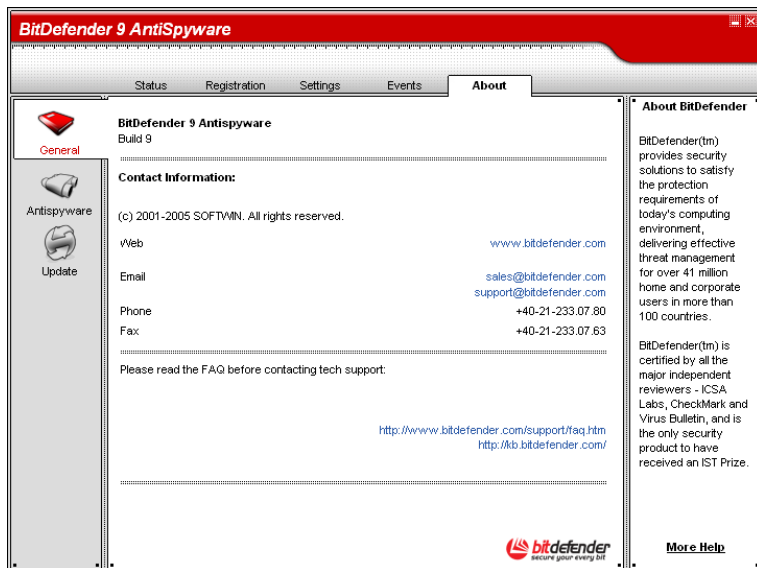
If the **management console** is open at the **Events** section and at the same time an event occurs you must click **Refresh** to see that event.

To delete all the events from the list click **Clear log**.

## 6.5. About

To access this section click **About** tab in the **General** module.

In this section you can find the contact information and the product details.



### General information

BitDefender provides security solutions to satisfy the protection requirements of today's computing environment, delivering effective threat management for over 41million home and corporate users in more than 100 countries.

BitDefender is certified by all the major independent reviewers - **ICSA Labs**, **Check-Mark** and **Virus Bulletin**, and is the only security product to have received an **IST Prize**.



## 7. Antispyware module

The **Antispyware** section of this user guide contains the following topics:

- On-access scanning
- On-demand scanning
- Scheduled scanning
- System Information
- Quarantine
- Report

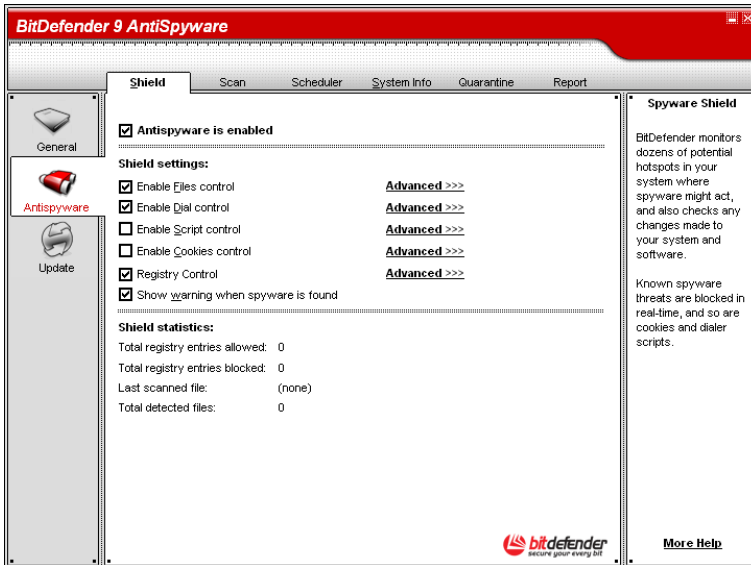


### Note

For more details regarding the **Antispyware** module check the description of the "*Antispyware module*" (p. 17).

### 7.1. On-access scanning

To access this section click **Shield** tab from the **Antispyware** module.



## Spyware Shield

BitDefender monitors dozens of potential “hotspots” in your system where spyware might act, and also checks any changes made to your system and software. Known spyware threats are also blocked in real-time.

In this section you can configure the **Spyware Shield** and you can view information regarding its activity.

### Note



To prevent spyware from infecting your computer keep the **Spyware Shield** enabled.

In the bottom side of the section you can see the **Spyware Shield** statistics.

Select **Show warning when a spyware is found** to be noticed through an alert window when a spyware is found. For an infected file the alert window will contain the name of the spyware, the path to it, the action taken by BitDefender and a link to the Bit-Defender site where you can find more information about it.

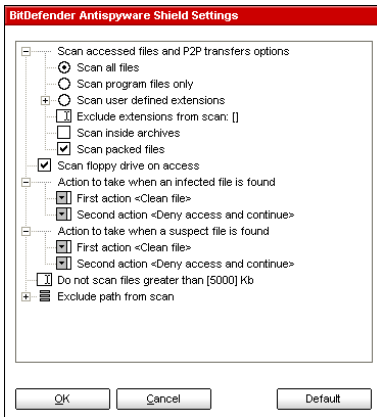
In case a suspicious file is detected you can launch a wizard from the alert window that will help you to send that file to the BitDefender Lab for further analysis. You can type in your e-mail address to receive information regarding this report.

The **Spyware Shield** protects your computer against spywares through 5 important protection controls.

- Files Control
- Dial Control
- Script Control
- Cookies Control
- Registry Control

## 7.1.1. Files Control

Click **Advanced >>>** corresponding to **Files Control** to configure this protection.



Click the box with "+" to open an option or the box with "-" to close an option.

You can observe that some scan options, although the "+" sign appears, cannot be opened. The reason is that these options weren't selected yet. You will observe that if you select them, they can be opened.

### Files Control

- **Scan accessed files and P2P transfers options** - scans the accessed files and the communications through Instant Messaging Software applications (ICQ, NetMeeting, Yahoo Messenger, MSN Messenger). Further on, select the type of the files you want to be scanned.

The following options are available:

Option	Description
<b>Scan all files</b>	All the accessed files will be scanned, regardless their type.
<b>Scan program files only</b>	Only the program files will be scanned. This means only the files with the following extensions: .exe; .bat; .com; .dll; .ocx; .scr; .bin; .dat; .386; .vxd; .sys; .wdm; .cla; .class; .ovl; .ole; .exe; .hlp; .doc; .dot; .xls; .ppt; .wbk; .wiz; .pot; .ppa; .xla; .xlt; .vbs; .vbe; .mdb; .rtf; .htm; .hta; .html; .xml; .xtp; .php; .asp; .js; .shs; .chm; .lnk; .pif; .prc; .url; .smm; .pdf; .msi; .ini; .csc; .cmd; .bas; .eml and .nws.
<b>Scan user defined extensions</b>	Only the files with the extensions specified by the user will be scanned. These extensions must be separated by ",".
<b>Exclude extensions from scan</b>	The files with the extensions specified by the user will NOT be scanned. These extensions must be separated by ",".
<b>Scan inside archives</b>	The accessed archives will be scanned. With this option on, the computer will slow down.
<b>Scan packed files</b>	All packed files will be scanned.

- **Scan floppy drive on access** - scans the floppy drive, when it is accessed.
- **Action to take when an infected file is found** - select from the drop-down menu the first action to take on infected files. BitDefender allows selecting two actions in case an infected file is found.

You can select one of the following actions:

Action	Description
<b>Deny access and continue</b>	In case an infected file is detected, the access to this will be denied.
<b>Clean file</b>	Disinfects the infected file.



Action	Description
<b>Delete file</b>	Deletes the infected files immediately, without any warning.
<b>Move file to quarantine</b>	Move the infected files into the quarantine.

- **Second action to take when first fails** - select from the drop-down menu the second action to take on infected files, in case the first action fails.

You can select one of the following actions:

Action	Description
<b>Deny access and continue</b>	In case an infected file is detected, the access to this will be denied.
<b>Delete file</b>	Deletes the infected files immediately, without any warning.
<b>Move file to quarantine</b>	Move the infected files into the quarantine.

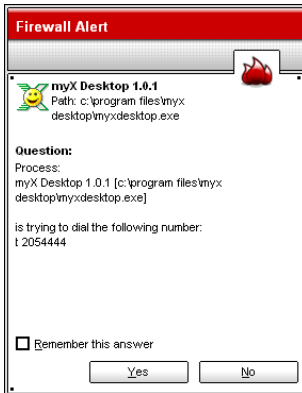
The same actions as for infected files are available for suspected ones.

- **Do not scan files greater than** - type in the maximum size of the files to be scanned. If the size is 0 Kb, all files will be scanned
- **Exclude path from scan** - click "+" corresponding to this option in order to specify a folder that will be excluded from scanning. The consequence of this will be that the option will expand and a new option, *New item*, will appear. Click the corresponding checkbox of the new item and from the exploring window select the folder you want to be excluded from scanning

## 7.1.2. Dial Control

Click **Advanced** >>> corresponding to **Dial Control** to configure this protection.



**Dial Control alert**

You can see the name of the application and the phone number.

Check **Remember this answer** option and click **Yes** or **No** and a rule will be created, applied and listed in the rules table. You will no longer be notified when the application tries to dial the same phone number.

Every rule that has been remembered can be accessed in the **Dial** section for further fine-tuning.



### Important

The rules are listed in order of their priority starting from the top, meaning the first rule has the highest priority. Drag&drop rules in order to change their priority.

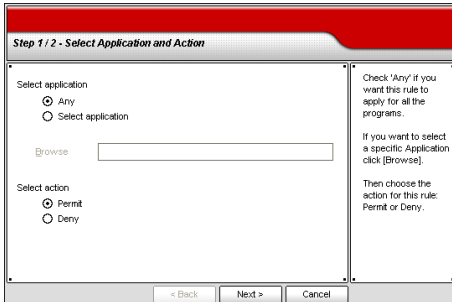
To delete a rule, just select it and click **Delete**. To modify a rule's attribute just double click its field. To temporarily deactivate a rule without deleting it, clear the corresponding checkbox.

The rules can be input automatically (through the alert window) or manually (click **New** rule and choose the parameters for the rule). The configuration wizard will appear.

## Configuration wizard

The configuration wizard is a 2 steps procedure.

## Step 1/2 - Select application and action



### Select application and action

You can set the parameters:

- **Application** - select the application for the rule. You can choose only one application (click **Select file**, then **Browse** and select the application) or all the applications (just click **Any**).
- **Action** - select the action of the rule.

Action	Description
Permit	The action will be permitted.
Deny	The action will be denied.

Click **Next**.

## Step 2/2 - Select the phone numbers

Step 2 / 2 - Select Phone Numbers

Select phone number

Any

Specify phone number

89899898 89899898

Add Remove

< Back Finish Cancel

Check Any if you want this rule to apply for any phone number.

You can also create a rule that permits a certain program to dial only certain numbers (such as that of your Internet Service Provider or your fax news service).

### Select the phone numbers

Click **Specify phone numbers**, type in the phone number for which the rule will be applied and click **Add**.



#### Note

You can use wild cards in your list of banned phone number; e.g.: 1900\* means all numbers beginning with 1900 will be blocked.

Check **Any** if you want this rule to apply for any phone number. To delete a phone number select it and click **Remove**.



#### Note

You can also create a rule that permits a certain program to dial only certain numbers (such as that of your Internet Service Provider or your fax news service).

Click **Finish**.

Click **Apply** to save the changes.

## 7.1.3. Script Control

Click **Advanced** > > > corresponding to **Script Control** to configure this protection.



**Script Control alert**

You can see the name of the resource.

Check **Remember this answer** option and click **Yes** or **No** and a rule will be created, applied and listed in the rules table. You will no longer be notified when the same site tries to send you active content.

Every rule that has been remembered can be accessed in the **Script** section for further fine-tuning.



### Important

The rules are listed in order of their priority starting from the top, meaning the first rule has the highest priority. Drag&drop rules in order to change their priority.

To delete a rule, just select it and click **Delete**. To modify a rule's attribute just double click its field. To temporarily deactivate a rule without deleting it, clear the corresponding checkbox.

The rules can be input automatically (through the alert window) or manually (click **New** rule and choose the parameters for the rule). The configuration wizard will appear.

## Configuration wizard

The configuration wizard is a 1 step procedure.

## Step 1/1 - Select address and action

### Select address and action

You can set the parameters:

- **Domain address** - type in the domain on which the rule should apply.
- **Action** - select the action of the rule.

Action	Description
Permit	The scripts on that domain will execute.
Deny	The scripts on that domain will not execute.

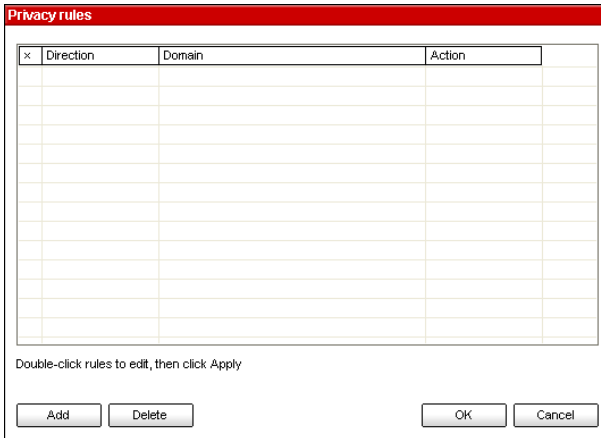
Click **Finish**.

Click **Apply** to save the changes.

## 7.1.4. Cookies Control

Click **Advanced** > > > corresponding to **Cookies Control** to configure this protection.





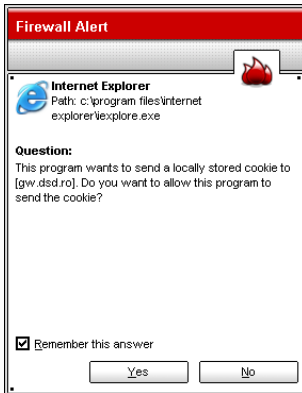
### Script Control

**Cookies** are a very common occurrence on the Internet. They are small files stored on your computer. Websites create these cookies in order to keep track of specific information about you.

Cookies are generally made to make your life easier. For example they can help the website remember your name and preferences, so that you don't have to enter them on every visit.

But cookies can also be used to compromise your privacy, by tracking your surfing patterns.

This is where **Cookie Control** helps. When enabled, **Cookie Control** will ask for your permission whenever a new website tries to set a cookie:



Cookie Control alert

You can see the name of the application that is trying to send the cookie file.

Check **Remember this answer** option and click **Yes** or **No** and a rule will be created, applied and listed in the rules table. You will no longer be notified the next time when you connect to the same site.

This will help you to choose which websites you trust and which you don't.



### Note

Because of the great number of cookies used on the Internet today, **Cookie Control** can be quite bothersome to begin with. At first, it will ask a lot of questions about sites trying to place cookies on your computer. As soon as you add your regular sites to the rule-list, surfing will become as easy as before.

Every rule that has been remembered can be accessed in the **Cookies Control** section for further fine-tuning.



### Important

The rules are listed in order of their priority starting from the top, meaning the first rule has the highest priority. Drag&drop rules in order to change their priority.

To delete a rule, just select it and click **Delete**. To modify a rule's attribute just double click its field. To temporarily deactivate a rule without deleting it, clear the corresponding checkbox.

The rules can be input automatically (through the alert window) or manually (click **New** rule and choose the parameters for the rule). The configuration wizard will appear.

## Configuration wizard

The configuration wizard is a 1 step procedure.

### Step 1/1 - Select address, action and direction

**Step 1 / 1 - Select Address and Action**

Enter domain  
www.softwin.ro

Select action  
 Permit  
 Deny

Select the specific domain(s) that you want to allow or block scripting for. Generally, you should use this wizard to specify the domains you want to Permit scripting from. It is recommended that you block scripts from all domains you don't explicitly trust. Please note that some sites will not function properly without scripts.

Back Finish Cancel

#### Select address, action and direction

You can set the parameters:

- **Domain address** - type in the domain on which the rule should apply.
- **Action** - select the action of the rule.

Action	Description
Permit	The cookies on that domain will execute.
Deny	The cookies on that domain will not execute.

- **Direction** - select the traffic direction.

Type	Description
Outgoing	The rule applies only for the cookies that are sent out back to the connected site.

Type	Description
Incoming	The rule applies only for the cookies that are received from the connected site.
Both	The rule applies in both directions.

Click **Finish**.



### Note

You can accept cookies but never return them by setting the action to **Deny** and the direction to **Outgoing**.

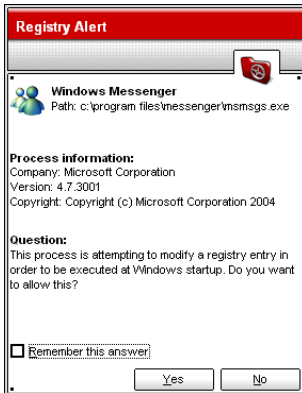
Click **Apply** to save the changes.

## 7.1.5. Registry Control

A very important part of the Windows operating system is called the **Registry**. This is where Windows keeps its settings, installed programs, user information and so on.

The **Registry** is also used to define which programs should be launched automatically when Windows is started. Viruses often use this in order to be automatically launched when the user restarts his computer.

**Registry Control** keeps an eye on the Windows Registry - this is again useful for detecting Trojan horses. It will alert you whenever a program will try to modify a registry entry in order to be executed at Windows start-up.



You can deny this modification by clicking **No** or you can allow it by clicking **Yes**.

If you want BitDefender to remember your answer you must select the checkbox: **Remember this answer**.

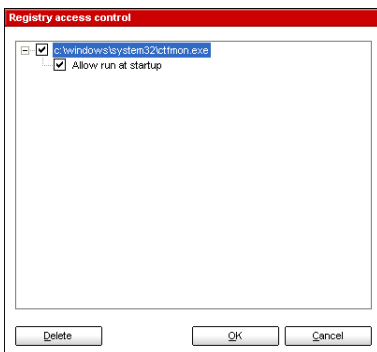
### Registry Alert



### Note

Your answers will be the basis of the rule-list.

If you want to see the registry entries list, click **Advanced** >>> corresponding to **Registry Control**.



For each application a small expandable menu will be created; it contains all the modifications to the registry.

To delete a registry entry, just select it and click **Delete**. To temporarily deactivate a registry entry without deleting it, clear the checkbox corresponding to it.

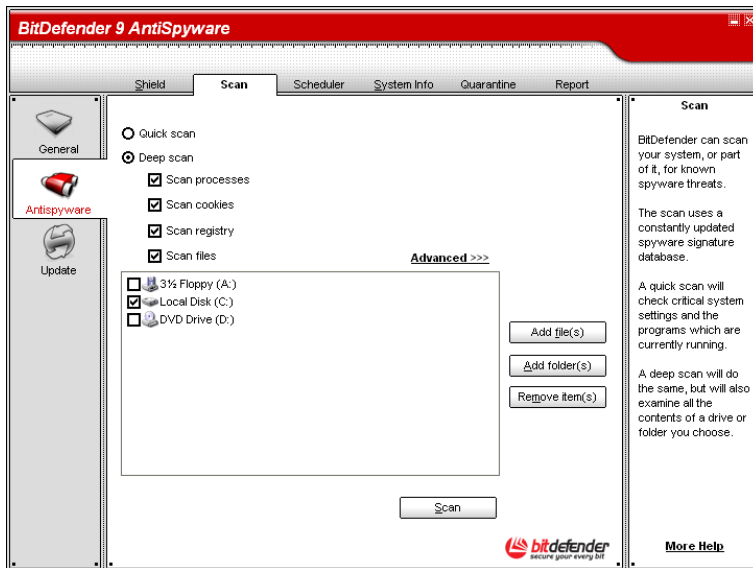
### Registry access control

**Note**

BitDefender will usually alert you when you install new programs that need to run after the next startup of your computer. In most cases, these programs are legitimate and can be trusted

## 7.2. On-demand scanning

To access this section click **Scan** tab from the **Antispyware** module.

**Scan**

In this section you can configure BitDefender to scan your computer.

The main objective for BitDefender is to keep your computer clean of spywares. This is first and foremost done by keeping new spywares out of your computer and by scanning your e-mail messages and any new files downloaded or copied to your system.

There is a risk that a spyware is already lodged in your system, before you even install BitDefender. This is why it's a very good idea to scan your computer for resident spywares after you've installed BitDefender. And it's definitely a good idea to frequently scan your computer for spywares.

BitDefender allows four types of on demand scan:

- **Immediate scanning** - there are a few steps to follow in order to scan your computer for spywares;
- **Contextual scanning** - right-click on a file or a folder and select BitDefender Anti-virus v9;
- **Drag& Drop scanning** - drag and drop a file or a folder over the **Scan Activity Bar**;
- **Scheduled scanning** - you can program BitDefender to scan your system for spywares periodically.

## 7.2.1. Immediate scanning

To scan your computer for viruses, please follow the next steps:

### Step 1/5 - Close all open programs

In order for BitDefender to make a complete scanning, you need to shut down all open programs. Especially your email-client (i.e. Outlook, Outlook Express or Eudora) is important to shut down.

### Step 2/5 - Make sure that BitDefender knows the latest spywares

Before you let BitDefender scan your computer you should make sure that BitDefender is up to date with its spyware signatures, since new spywares are found and identified every day. You can verify when the last update was made in the upper side of the **Update** module.

## Step 3/5 - Choose scan targets

In the management console, enter the **Antivirus** module and click **Scan** tab. By default, the section contains an image of the system's partition structure. Besides this, some buttons and scan options can also be observed.

You can select from 2 scan types:

- **Quick scan** - if you select this options only the registry entries, cookies, processes and some specific files will be scanned against spywares;
- **Deep scan** - If you select this option you have the possibility to select some other settings.

For antispyware scan you have 3 options:

- **Scan processes** - scans all processes from memory against spywares;
- **Scan cookies** - scans all cookie files against spywares;
- **Scan registry** - scans all registry entries against spywares.

The section contains the following buttons:

- **Add file(s)** - opens, a browsing window, where you can select the file(s), you want to scan.
- **Add folder(s)** - same as above, but you select which folder(s) you want BitDefender to scan instead of which file(s).



### Note

You can also use drag and drop to add files/folders to the list.

- **Remove item(s)** - removes the file(s) / folder(s) that has been previously selected from the list of objects to be scanned.



### Note

Only the file(s) / folder(s) that were added afterwards can be deleted, but not those that were automatically "seen" by BitDefender.

- **Advanced** - opens a window where you can specify which files to be scanned, the action on the infected files, generating alert messages, saving scan results in report files.



- **Scan** - launches the system scanning, taking in account the selected scan options.



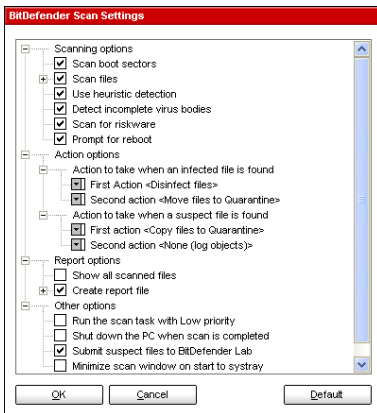
### Important

If you are not that familiar with computers, now is the time to just click the **Scan** button. BitDefender will start the scanning of your computer using the standard settings, which are sufficient.

## Step 4/5 - Select the scan options

Advanced users might want to take advantage of the scan-settings BitDefender offers. The scanner can be set to skip file extensions, directories or archives that you know to be harmless. This may greatly reduce scanning times and improve your computer responsiveness during a scan.

Click **Advanced** from the **Scan** section to explore these options.



The scan options are organized like an expandable menu very much like the exploring ones from Windows.

### Scan settings

The scan options are grouped in four categories:

- **Scanning options**
- **Action options**
- **Report options**
- **Other options**

**Note**

Click the box with "+" to open an option or the box with "-" to close an option.

- Specify the type of objects to be scanned (archives, e-mail messages and so on) and other options. This is made through the selection of certain options from **Scanning options** category.

The following detection options are available:

Option	Description														
<b>Scan boot sectors</b>	Scans the system's boot sector.														
<b>Scan files</b>	<table border="0"> <tr> <td><b>Scan all files</b></td> <td>Scans all files, regardless of their type.</td> </tr> <tr> <td><b>Scan program files only</b></td> <td>Only the program files will be scanned. This means only the files with the following extensions: exe; bat; com; dll; ocx; scr; bin; dat; 386; vxd; sys; wdm; cla; class; ovl; ole; exe; hlp; doc; dot; xls; ppt; wbk; wiz; pot; ppa; xla; xlt; vbs; vbe; mdb; rtf; htm; hta; html; xml; xtp; php; asp; js; shs; chm; lnk; pif; prc; url; smm; pdf; msi; ini; csc; cmd; bas; eml and nws.</td> </tr> <tr> <td><b>Scan user defined extensions</b></td> <td>Scans only the files with the extensions specified by the user. These extensions must be separated by ";".</td> </tr> <tr> <td><b>Exclude user defined extensions</b></td> <td>The files with the extensions specified by the user will NOT be scanned. These extensions must be separated by ";".</td> </tr> <tr> <td><b>Open packed programs</b></td> <td>Scans packed files.</td> </tr> <tr> <td><b>Open archives</b></td> <td>Scans inside archives.</td> </tr> <tr> <td><b>Open e-mail archives</b></td> <td>Scans inside mail archives.</td> </tr> </table>	<b>Scan all files</b>	Scans all files, regardless of their type.	<b>Scan program files only</b>	Only the program files will be scanned. This means only the files with the following extensions: exe; bat; com; dll; ocx; scr; bin; dat; 386; vxd; sys; wdm; cla; class; ovl; ole; exe; hlp; doc; dot; xls; ppt; wbk; wiz; pot; ppa; xla; xlt; vbs; vbe; mdb; rtf; htm; hta; html; xml; xtp; php; asp; js; shs; chm; lnk; pif; prc; url; smm; pdf; msi; ini; csc; cmd; bas; eml and nws.	<b>Scan user defined extensions</b>	Scans only the files with the extensions specified by the user. These extensions must be separated by ";".	<b>Exclude user defined extensions</b>	The files with the extensions specified by the user will NOT be scanned. These extensions must be separated by ";".	<b>Open packed programs</b>	Scans packed files.	<b>Open archives</b>	Scans inside archives.	<b>Open e-mail archives</b>	Scans inside mail archives.
<b>Scan all files</b>	Scans all files, regardless of their type.														
<b>Scan program files only</b>	Only the program files will be scanned. This means only the files with the following extensions: exe; bat; com; dll; ocx; scr; bin; dat; 386; vxd; sys; wdm; cla; class; ovl; ole; exe; hlp; doc; dot; xls; ppt; wbk; wiz; pot; ppa; xla; xlt; vbs; vbe; mdb; rtf; htm; hta; html; xml; xtp; php; asp; js; shs; chm; lnk; pif; prc; url; smm; pdf; msi; ini; csc; cmd; bas; eml and nws.														
<b>Scan user defined extensions</b>	Scans only the files with the extensions specified by the user. These extensions must be separated by ";".														
<b>Exclude user defined extensions</b>	The files with the extensions specified by the user will NOT be scanned. These extensions must be separated by ";".														
<b>Open packed programs</b>	Scans packed files.														
<b>Open archives</b>	Scans inside archives.														
<b>Open e-mail archives</b>	Scans inside mail archives.														
<b>Use heuristic detection</b>	To use heuristic scanning of the files. The aim of heuristic scanning is to identify new viruses, based on certain patterns and algorithms, be-														

Option	Description
	fore a virus definition is found. False alarm messages can appear. When such a file is detected it is classified as suspicious. In these cases, we recommend you to send the file to the BitDefender lab to be analyzed
<b>Detect incomplete virus bodies</b>	Detects incomplete virus bodies.
<b>Prompt for reboot</b>	If actions require reboot, prompt users for immediate reboot.

- Specify the action on infected or suspicious files. Open **Action options** category in order to see all possible actions on these files.

Select the actions to take when an infected or a suspected file is detected. You can specify different actions for infected and suspected files. You can also select a second action if the first fails.

Action	Description
<b>None</b>	No action will be taken on infected files. These files will appear in the report file.
<b>Prompt user for action</b>	When an infected file is detected, a window will appear prompting the user to select the action on that file. Depending on the importance of that file, you can select to disinfect it, isolate it in the quarantine zone or delete it.
<b>Disinfect files</b>	Disinfects the infected file.
<b>Delete files</b>	Deletes the infected files immediately, without any warning.
<b>Rename files</b>	Changes the extension of the infected files. The new extension of the infected files will be <code>.vir</code> . By renaming the infected files, the possibility of executing and thus of spreading the infection is removed. At the same time they can be saved for further examination and analysis.

Action	Description
<b>Copy files to Quarantine</b>	Copies the infected files into the quarantine. This means practically duplicating the infected file and the copy of this file will appear in the quarantine, but the infected file will not be moved from the initial location.
<b>Move files to Quarantine</b>	Moves the infected files into the quarantine.

- Specify the options for the report files. Open **Report options** category in order to see all possible options.

Option	Description
<b>Show all scanned files</b>	Lists all scanned files and their status (infected or not) in a report file. With this option on, the computer will slow down.
<b>Create report file</b> <b>Report file name</b> vs- can.log	This is an edit field that allows changing the name of the report file. Select this option and type in a new name.
<b>Limit report size to</b> [x] KB	Limits the size of the report file. Type in the maximum file size.



### Note

The report files can be seen in the [Report](#) section from the **Antivirus** module.

- Specify the other options. Open **Other options** category from where you can select the following options:

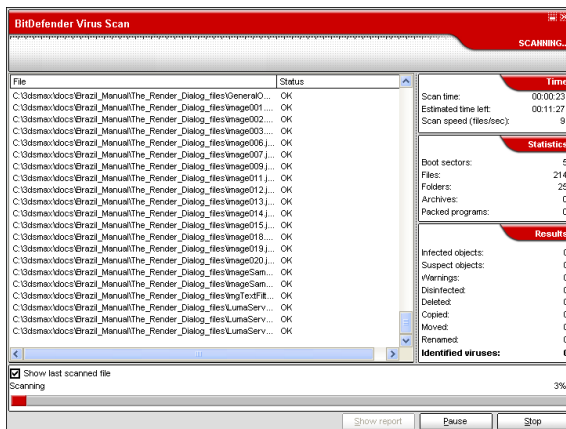
Option	Description
<b>Run the task with Low priority</b>	Decreases the priority of the scan process. You will allow other programs to run faster and increase the time needed for the scan process to finish.

Option	Description
<b>Shut down the PC when scan is completed</b>	Shut down the computer after the scan process has finished.
<b>Submit suspect files to BitDefender Lab</b>	You will be prompted to submit all suspect files to BitDefender lab after the scan process has finished.
<b>Minimize scan window on start to systay</b>	Minimizes the scan window to <b>system tray</b> . Double-click the BitDefender icon to open it.

Click **OK** to save the changes or click **Default** to load the default settings.

## Step 5/5 - Scan for spywares

With the scan options selected, all you have to do is to effectively start the system scanning. For that, just click **Scan**. This may take a while, depending on the size of your hard disk drive.



### Spyware Scan

While scanning, BitDefender will show you its progress and alert you if any spywares are found.

Select the checkbox corresponding to **Show last scanned file** and only the information about the last scanned files will be visible.

Three buttons are available:

- **Stop** - opens a new window from where you can end the scan process. Click **Yes&Close** to exit the scan window.
- **Pause** - stops temporarily the scan process - you can continue it by clicking **Resume**.
- **Show report** - opens the scan report.



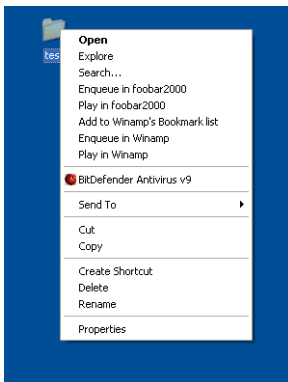
### Note

The report file is saved automatically in the [Report](#) section from the **Antivirus** module.

An icon will appear in the [system tray](#) when a scan process is running.

## 7.2.2. Contextual scanning

Right-click the file or folder you want scanned and select the **BitDefender Antivirus v9**.

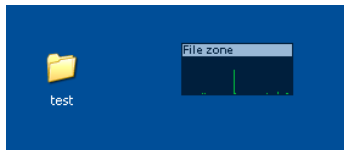


Contextual Scan

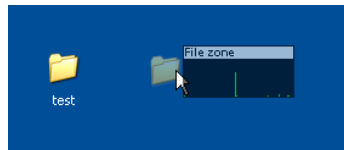
A report file named `vscan.log` will be created and you can open it from the [Report](#) section, **Antivirus** module.

## 7.2.3. Drag&Drop Scanning

Drag the file or folder you want scanned and drop it over the **Scan Activity Bar**, like in the pictures below.



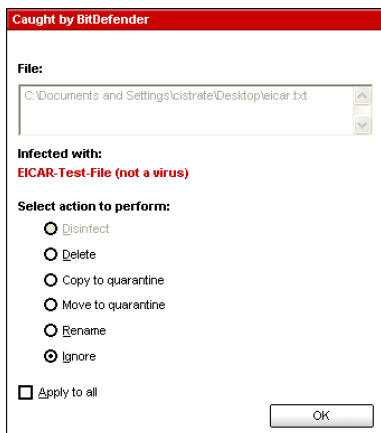
Drag the file



Drop the file

A report file named `activbar.log` will be created and you can open it from the [Report](#) section, **Antivirus** module.

In both alternative scanning (contextual and drag&drop Scanning) the scan window will appear. If a virus is detected, an alert window will prompt you to select the action on the infected file.



Action Selection

You can view the name of the file and the name of the spyware.

Select one of the following actions to take on the infected file:

- **Disinfect** - disinfects the infected file;
- **Delete** - deletes the infected file;

- **Copy to quarantine** - copies the infected file into the quarantine;
- **Move to quarantine** - moves the infected file into the quarantine;
- **Rename** - changes the extension of the infected files. The new extension of the infected files will be .vir..
- **Ignore** - ignores the infection. No action will be taken on the infected file.

If you scan a folder, and you wish the action on the infected files to be the same for all, select the checkbox corresponding to **Apply to all**.



#### Note

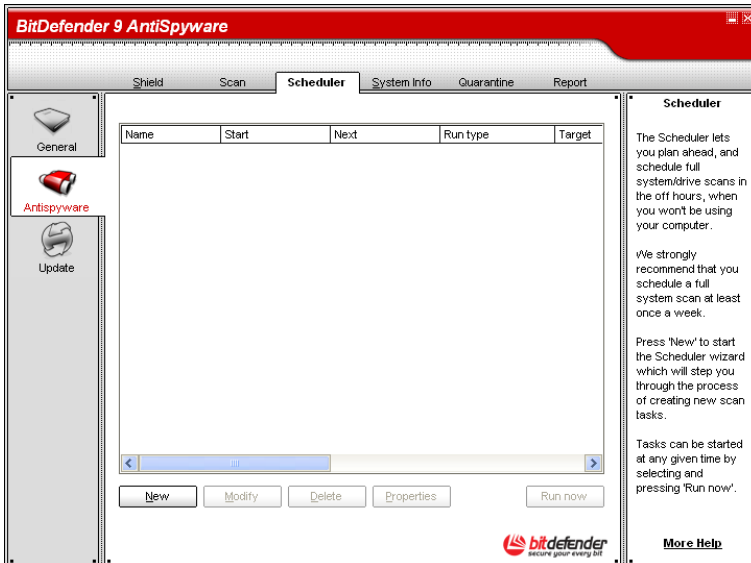
If the **Disinfect** option is not enabled, it means the file cannot be disinfected. The best choice is to isolate it in the quarantine zone and send it to us for analysis or delete it

Click **OK**.

## 7.2.4. Scheduled scanning

To access this section click **Scheduler** tab from the **Antispyware** module.





## Scheduler

Since the scanning will take some time, and works best if you have closed all other programs, it is best for you to schedule the scanning at a time when you are not using your computer and it is standing idly by. This implies that the user must previously create a so-called task, job or scan event.

The **Scheduler** contains a wizard for creating new scan tasks. This will assist you any time you need to do any operation with these scan events, no matter if it's creating a new task or modifying an existing one.

The **Scheduler** section contains some buttons for administrating the scan tasks.

- **New** - launches the wizard that will guide you through the creation of a new scan task.
- **Modify** - modifies the properties of a previously created task. It also launches the wizard.

**Note**

If you modify the event's name, a new event will be created, under the newly introduced name.

- **Delete** - deletes a selected task.
- **Run Now** - runs the selected task.
- **Properties** - opens the properties of the selected task.

The Scheduler's screen also contains a list where all the scan tasks can be seen, with their names, the date of the first execution, the date of the next execution and the task's type (periodically or one time only).

If you right-click a scheduled event, a contextual menu with options similar to those described above will appear.

**Note**

The **Scheduler** allows an unlimited number of scheduled scan events

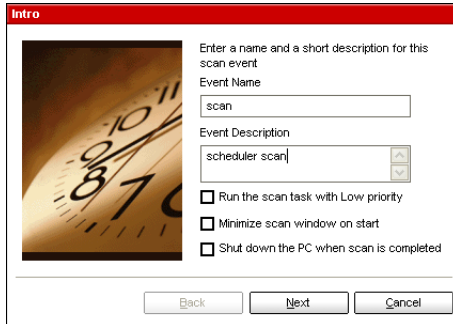
You can also navigate through the scan events using the keyboard: press the **Delete** button to erase the selected scan event, press the **Enter** button in order to view the selected event properties or press the **Insert** button in order to create a new event (the wizard will appear).

**Note**

Press the navigation buttons in order to scroll the page up or down or right to left.

Click **New** to set up a new entry in the scheduler. This will launch the scheduler wizard, which step by step will allow you to define your scan.

## Step 1/9 - Welcome Window



**Intro**

Enter a name and a short description for this scan event

Event Name  
scan

Event Description  
scheduler scan

Run the scan task with Low priority

Minimize scan window on start

Shut down the PC when scan is completed

Back Next Cancel

### Intro

Type in the name of the new event in the **Event name** field and a short description in the **Event description** field.

The following options are available:

- **Run the task with Low priority** - Decreases the priority of the scan process. You will allow other programs to run faster and increase the time needed for the scan process to finish.
- **Minimize scan window on start** - Minimizes the scan window to [system tray](#). Double-click the BitDefender icon to open it.
- **Shut down the PC when scan is completed** - Shut down the computer after the scan process has finished.

Click **Next** to continue. If you click **Cancel** a window will appear requesting you to confirm your option: to abort the wizard or to continue.

## Step 2/9 - Start Time/Date

### Start Time/Date

Select the scan frequency:

- **Once** - launches the scan only once, at a certain moment.
- **Periodically** - launches the scan periodically, at certain time intervals(hours, days, weeks, months, years) starting with a specified date and time.

If you want the scan to be repeated after certain intervals, select the checkbox corresponding to **Periodically** and type in the **At every** edit box the number of minutes/hours/days/weeks/ months/years you want to repeat this process.



### Note

Use the up/down arrows of this box in order to increase/decrease the number of minutes/hours/ days/weeks/months/years.

Select the time interval - minutes, hours, days, weeks, months, years - to which the scan be repeated.



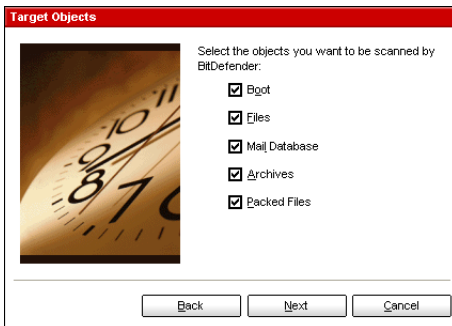
### Important

If you made your option for a repeated scan, the event will be launched for an unlimited time-period. In order to give up the event, it must be erased from the events list of the [Scheduler](#) window.

If you want to automatically close the scan window if no infected or suspected files were found during the scan process, select the checkbox corresponding to this option.

Click **Back** to go to the previous step or click **Next** to continue the wizard.

## Step 3/9 - Target Objects



### Target Objects

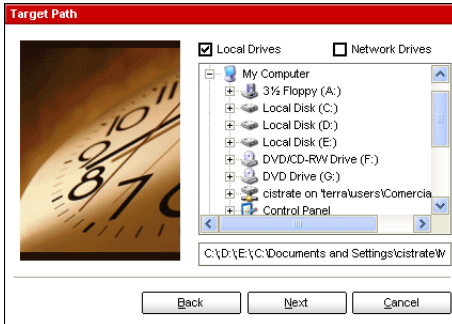
Select the objects you want to be scanned:

- **Boot** - scans the boot sector, in order to identify the boot viruses;
- **Files** - scans files;
- **Mail Database** - scans mail archives in order to detect mail viruses;
- **Archives** - scans inside archives;
- **Packed Files** - scans packed files.
- **Cookies** - scans cookie files against spyware.
- **Registry** - scans registry entries against spyware.
- **Memory** - scans memory against spyware.
- **Files** - scans files against spyware.

Select one or more objects to scan, by simply selecting the corresponding checkboxes.

Click **Back** to go to the previous step or click **Next** to continue the wizard.

## Step 4/9 - Target Path



### Target Path

Specify the path to the objects that will be scanned.

This screen is actually an exploring window that lets you select the partitions and folders to be scanned. When the cursor is placed on a folder, the complete path to the folder will appear in the field placed under this exploring window.



### Note

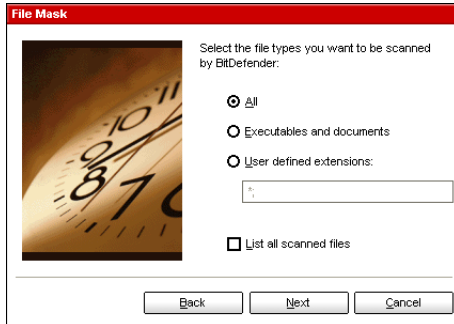
Click the box with "+" to open an option or the box with "-" to close an option.

Also, in order to select the locations to be scanned, you can use the fast-selection options placed on the topside of the window:

- **Local drives** - scans all local drives;
- **Network drives** - scans all network drives.

Click **Back** to go to the previous step or click **Next** to continue the wizard.

## Step 5/9 - File Mask



### File Mask

Specify the types of the files that will be scanned. This step is necessary if you have selected to scan files in the [third step](#).

The following options are available:

- **All** - scans all files, no matter what their type is;
- **Executables and documents** - scans only the program files and documents;
- **From list** - scans only the files whose extensions appear in the list.



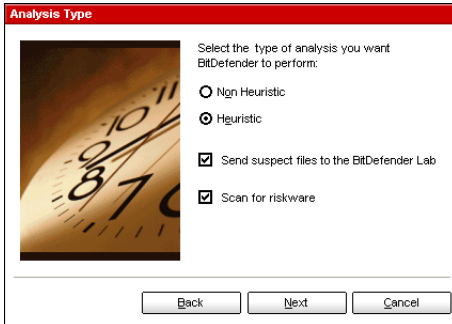
### Note

These extensions must be separated by a semicolon “;”.

If you wish to see the information about all scanned files, infected or not, select the option **List all scanned files**. With this option checked, the computer will slow down.

Click **Back** to go to the previous step or click **Next** to continue the wizard.

## Step 6/9 - Analysis Type



### Analysis Type

Select the scan type:

- **Non Heuristic** - means scanning the files with the procedure based on known virus signatures;
- **Heuristic** - represents a method based on certain algorithms, whose aim is to identify new unknown viruses. Occasionally, it may report a suspicious code in normal programs, generating the so-called "false positive".

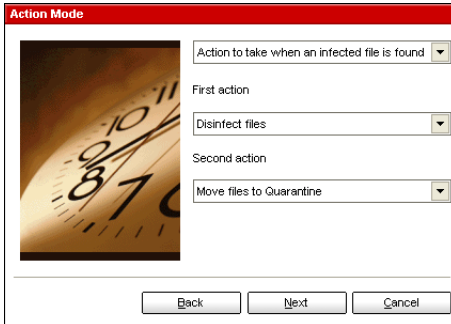
You have the following options:

- **Send suspect files to BitDefender Lab** - You will be prompted to submit all suspect files to BitDefender lab after the scan process has finished.
- **Scan for riskware** - Scan for threats other than viruses, such as dialers, spyware, and adware. These files will be treated as infected files. Software that includes adware components might stop working if this option is enabled.

Click **Back** to go to the previous step or click **Next** to continue the wizard.



## Step 7/9 - Action Mode



### Action Mode

BitDefender allows selecting two actions in case an infected or a suspected file is found. Select the actions for infected and suspected files.

Action	Description
None	No action will be taken on infected files. These files will appear in the report file.
Prompt user for action	When an infected file is detected, a window will appear prompting the user to select the action on that file. Depending on the importance of that file, you can select to disinfect it, isolate it in the quarantine zone or delete it.
Disinfect files	Disinfects the infected file.
Delete files	Deletes the infected files immediately, without any warning.
Rename files	Changes the extension of the infected files. The new extension of the infected files will be <code>.vir</code> . By renaming the infected files, the possibility of executing and thus of spreading the infection is removed. At the same time they can be saved for further examination and analysis.
Copy files to quarantine	Copies the infected files into the quarantine. This means practically duplicating the infected file and the copy of

Action	Description
	this file will appear in the quarantine, but the infected file will not be moved from the initial location.
<b>Move files to quarantine</b>	Moves the infected files into the quarantine zone. When the virus is in quarantine it can't do any harm.



### Note


We recommend you to select the first action **Disinfect files** and the second action **Move to quarantine**.

The same actions as for infected files are available for suspected ones.

Click **Back** to go to the previous step or click **Next** to continue the wizard.

## Step 8/9 - Report Info

**Report Info**



If you want BitDefender to create a report, check the "Create report file" box.

Create report file

Report file name :

Limit report file size to  
 KB

### Action Mode

To create a scan report, check **Create report file**. At this moment all the other options for the creation of a report file will be enabled.

Type the name of the report file in the **Report file name** field. By default, its name is schedule.log. It will contain all the information about the scan process: the number of identified viruses, the number of scanned files, the number of disinfected and deleted files.

You can also limit the size of the report file. Type in the maximum file size in the corresponding field.




### Note

The report files can be seen in the [Report](#) section from the **Antivirus** module.

Click **Back** to go to the previous step or click **Next** to continue the wizard.

## Step 9/9 - Summary

**Summary**



Please see below the scanning options:

Start: 26.08/2005 16:40:52  
 Run: one time only  
 Targets:   
 File Mask:   
 Analysis: heuristic  
 Report Info: schedule.log  
 Action to take when an infected file is found: Disinfect files / Move files to Quarantine  
 Action to take when a suspect file is found: Copy files to Quarantine / None (log objects)

Shut down the PC when scan is completed	No	Priority:	Normal
Minimize scan window on start	No	Send suspect files to the BitDefender Lab:	Yes
Elapsed time between end of scan and exit:	after 1 seconds	Scan for riskware	Yes

### Summary

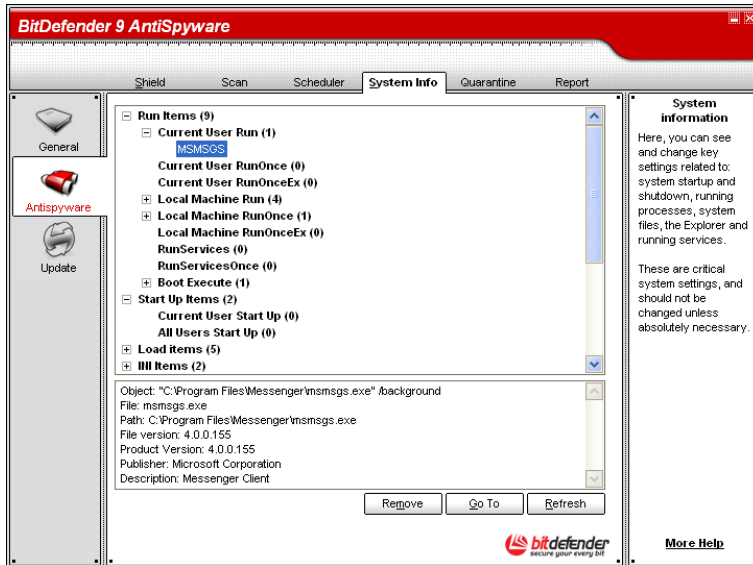
This is the last step of the wizard. In this window you can view all the settings for the new scan event and you can make any changes, by returning to the previous steps (**Back**).

If you do not want to make any modifications, click **Finish**.

The new event will appear in the [Scheduler](#) section.

## 7.3. System Information

To access this section click **System Info** tab from the **Antispyware** module.



### System Information

Here you can see and change key info settings.

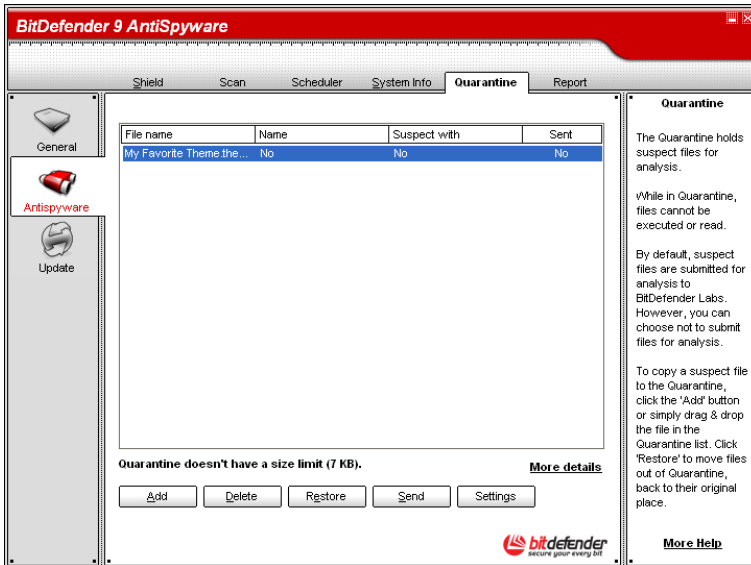
The list contains all the items loaded when starting the system as well as the items loaded by different applications.

Three buttons are available:

- **Remove** - deletes the selected item.
- **Go to** - opens a window where the selected item is placed (the **Registry** for example).
- **Refresh** - re-open the **System Information** section.

## 7.4. Quarantine

To access this section click **Quarantine** tab from the **Antispyware** module.



## Quarantine

BitDefender allows isolating the infected or suspicious files in a secure area, named quarantine. By isolating these files in the quarantine, the risk of getting infected disappears and, at the same time, you have the possibility to send these files for further analysis to the BitDefender lab.

The component that ensures the administration of the isolated files is **Quarantine**. This module was designed with a function for automatically sending the infected files to the BitDefender lab.

As you may notice, the **Quarantine** section contains a list of all the files that have been isolated so far. Every file has enclosed its name, size, isolating date and submission date. If you want to see more information about the quarantined files click **More info**.

The **Quarantine** section contains some buttons for administrating these files.

- **Add** - adds files to quarantine. Use this button to quarantine a file you suspect of being infected. A window will open and you can select the file from its location on the disk. This way the file is copied to quarantine.

If you want to move the file in the quarantine zone you must select the checkbox corresponding to **Delete from original location**. A quicker method to add suspicious files to the quarantine is to drag&drop them in the quarantine list.

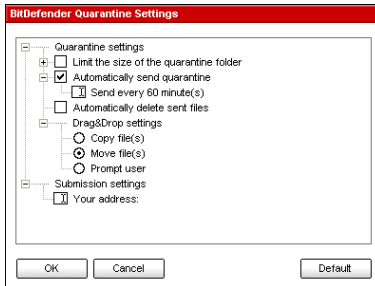
- **Delete** - deletes the selected file from your computer;
- **Restore** - returns the selected file to its original location.
- **Send** - sends the selected files for further analysis to the BitDefender lab.



### Important

You must specify some information before you may submit these files. For that click **Settings** and complete the fields from the **E-mail settings** section, as described below.

- **Settings** - opens the advanced options for the quarantine zone. The following window will appear:



Quarantine Settings

The quarantine options are grouped in two categories:

- **Quarantine settings**
- **Submission settings**

**Note**

Click the box with "+" to open an option or the box with "-" to close an option.

## Quarantine settings

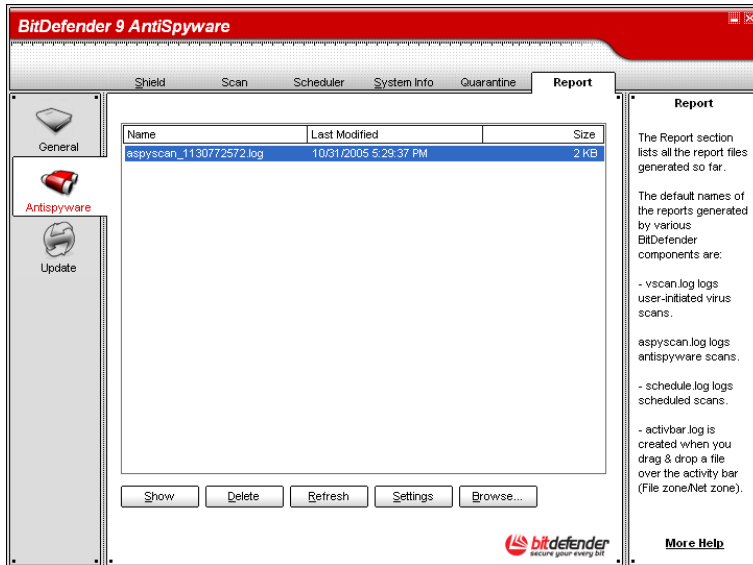
- **Limit the size of quarantine folder** - maintains under control the size of the quarantine. This option is enabled by default and its size is 12000 kB. If you want to change this value type in a new one in the corresponding field.
- **Automatically send quarantine** - sends automatically the quarantined files to the BitDefender Labs for further analysis. You can set the time period between two consecutive sending processes in minutes in the **Send quarantine every** field.
- **Automatically delete sent files** - deletes automatically the quarantined files after sending them to the BitDefender Lab for analysis.
- **Drag&Drop settings** - if you are using the Drag&Drop method to add files to the quarantine here you can specify the action: copy, move or prompt user.

## Submission settings

- **Your address** - type in your e-mail address in case you want to receive e-mail messages from our experts, regarding the suspicious files submitted for analysis.

## 7.5. Report

To access this section click **Report** tab from the **Antispyware** module.



## Report

The **Report** section contains a list of all the report files generated so far. Every file has enclosed its name, size and the date of the last modification.

When launching a scan process, the user has the possibility to opt for creating a report file where he can see information about the scan process. The user may open these reports from the management console.

BitDefender will keep track of its own activity on your computer. The default report files are the following:

- **Vscan.log** is created when you scan your system immediately;
- **Schedule.log** is from the scheduled scans you may have set up;
- **Activbar.log** is created when you scan by drag&drop feature.

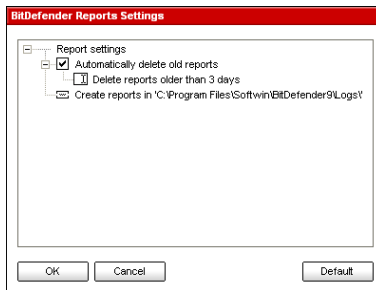
The **Report** section contains some buttons created for the administration of these report files. The function of each button is explained further:



**Note**

The report files are by default saved in the folder where BitDefender is installed. If you have saved the report files in another directory, use the **Browse** button to locate them.

- **Show** - opens the selected report file;
- **Delete** - deletes the selected report file;
- **Refresh** - refreshes the **Report** section. If the management console is open at the **Report** section and in the meantime you perform a scan of your computer, the new report file with the scan results will be visible only after you click **Refresh**.
- **Browse** - opens a window from where you can select the report files you want to see.
- **Settings** - opens the advanced options for the report files. The following window will appear:

**Report Settings****Note**

Click the box with "+" to open an option or the box with "-" to close an option.

- **Automatically delete old reports** - maintains under control the number of the report files, by deleting those older than a specified number of days. The default time interval is 3 days. If you want to change this value type in a new one in the corresponding field.
- **Create reports in** - specifies the folder where the report files will be saved.

Click **Apply** to save the changes. If you click **Default** you will load the default settings.

## 8. Update module

The **Update** section of this user guide contains the following topics:

- Automatic update
- Update settings

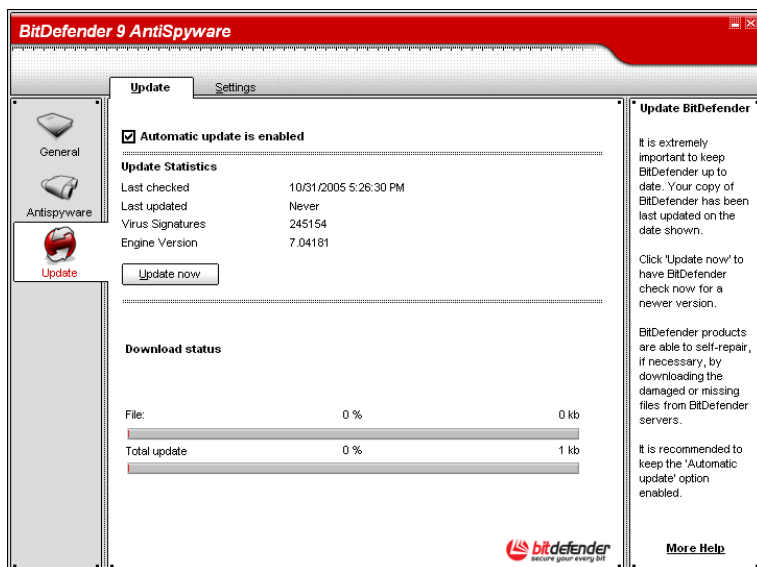


### Note

For more details regarding the **Update** module check the description of the "*Update module*" (p. 17).

### 8.1. Automatic update

To access this section click **Update** tab from the **Update** module.



### Automatic Update

If you are connected to the Internet through broadband or DSL, BitDefender takes care of this itself. It checks for new spyware signatures when you turn on your computer and every **hour** after that.

If an update was detected, depending on the options set in the [Automatic update options](#) section, you will be asked to confirm the update or the update will be made automatically.

The automatic update can also be done anytime you want by clicking **Update Now**. This update is also known as **Update by user request**.

The **Update** module will connect to the BitDefender update server and will verify if any update is available. If an update was detected, depending on the options set in the [Manual update type](#) section, you will be asked to confirm the update or the update will be made automatically.

**Important**

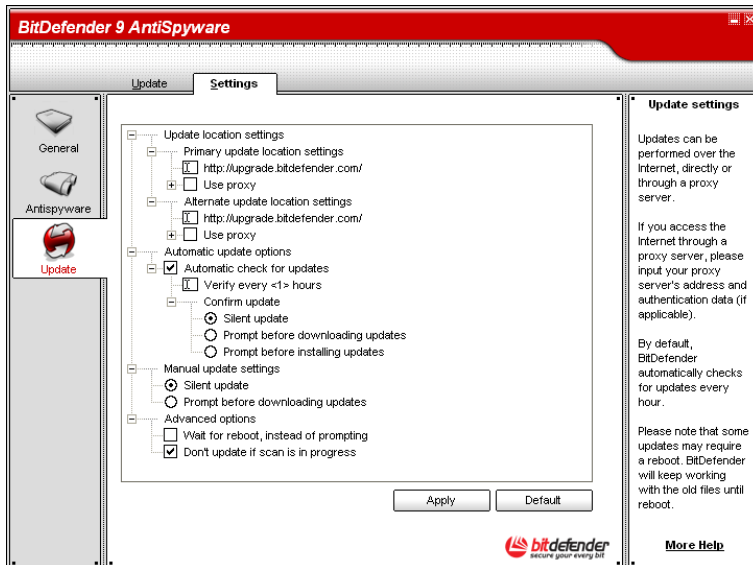
It may be necessary to restart the computer when you have completed the update. We recommend doing it as soon as possible.

**Note**

If you are connected to the Internet through a dial-up connection, then it's a good idea to make it a regular habit to update BitDefender by user request.

## 8.2. Update settings

To access this section click **Update** tab from the **Settings** module.



### Update Settings

The updates can be performed from the local network, over the Internet, directly or through a proxy server.

The window with the update settings contains 4 categories of options (**Update location settings**, **Automatic update options**, **Manual update type** and **Interface options**) organized in an expandable menu, similar to the ones from Windows.



### Note

Click the box labeled "+" to open a category or click the one labeled "-" to close it.

## 8.2.1. Update location settings

For more reliable and faster updates, you can configure two update locations: a **Primary update location** and an **Alternate update location**. For both of them you must configure the following options:

- **Update location** - If you are connected to a local network that has BitDefender virus signatures placed locally, you can change the location of the updates here. By default this is: <http://upgrade.bitdefender.com>.
- **Use proxy** - In case the company uses a proxy server check this option. The following settings must be specified:
  - **Proxy sets** - type in the IP or the name of the proxy server and the port BitDefender uses to connect to the proxy server.



### Important

Syntax: name:port or ip:port.

- **Proxy user** - type in a user name recognized by the proxy.



### Important

Syntax: domain\user.

- **Proxy password** - type in the valid password for the previously specified user.

## 8.2.2. Automatic update options

- **Automatic check for updates** - BitDefender automatically checks our servers for available updates.
- **Verify every x hours** - Sets how often BitDefender checks for updates The default time interval is 1 hour.
- **Silent update** - BitDefender automatically downloads and implements the update.
- **Ask before download** - every time an update is available, you will asked before download.
- **Ask before install** - every time an update was downloaded, you will asked before installing it.



### Important

If you select **Ask before download** or **Ask before install** and you close&exit the management console the automatic update will not be performed.

## 8.2.3. Manual update type

- **Silent update** - the manual update will be made automatically in background.
- **Ask before download** - every time you perform a manual update you will asked before downloading and installing the updates.



### Important

If you select **Ask before download** and you close&exit the management console the manual update will not be performed.

## 8.2.4. Interface options

- **Wait for reboot, instead of prompting** - If an update requires a reboot, the product will keep working with the old files until the system is rebooting. The user will

not be prompted for rebooting, therefore the BitDefender update process will not interfere with the user's work.

Click **Apply** to save the changes or click **Default** to load the default settings.



Best practices

# Best practices



Best practices

## 9. Best practices

The **Best practices** section of this user guide contains the topic:

- Antispyware

### 9.1. Antispyware

Steps to be followed in order to ensure a spyware-free computer:

1. Perform an update by user request of your spyware signatures as described in the "*Automatic update*" (p. 83) section.
2. Perform a full scan of your system as described in the "*Immediate scanning*" (p. 55) section.
3. In the **Status** section of the **General** module, keep enabled **Antispyware** and **Automatic update**.
4. In the **Shield** section of the **Antispyware** module, keep enabled the most important controls of BitDefender: **Files Control**, **Dial Control** and **Registry Control**.
5. Program your BitDefender to scan your system at least once a week as described in the "*Scheduled scanning*" (p. 64) section.



Getting help

# Getting help

Getting help

# 10. Support

## 10.1. Support department

As a valued provider, SOFTWIN strives to provide its customers with an unparalleled level of fast and accurate support. The Support Center listed below is continually being updated with the newest virus descriptions and answers to common questions, so that you obtain the necessary information in a timely manner.

At SOFTWIN, dedication to saving its customers time and money by providing the most advanced products at the fairest prices has always been a top priority. Moreover, we think that a successful business is based on a good communication and a commitment to excellence in customer support.

You are welcome to ask for support at <[support@bitdefender.com](mailto:support@bitdefender.com)> any time. For a prompt response, please include in your email as many details as you can about your BitDefender, about your system and describe the problem as accurate as possible.

## 10.2. On-line help

### 10.2.1. BitDefender Knowledge Base

The BitDefender Knowledge Base is an online repository of information about BitDefender products. It stores, in an easily accessible format reports on the results of the ongoing technical support and bugfixing activities of the BitDefender support and development teams, along with more general articles about virus prevention, the management of BitDefender solutions and detailed explanations, and many other articles.

The BitDefender Knowledge Base is open to the public and freely searchable. This wealth of information is yet another way to provide BitDefender customers with the technical knowledge and insight they need. All valid requests for information or bug reports coming from BitDefender clients eventually find their way into the BitDefender Knowledge Base, as bugfix reports, workaround cheatsheets or informational articles to supplement product helpfiles.

The BitDefender Knowledge Base is available any time at <http://kb.bitdefender.com>.

## 10.3. Contact information

Efficient communication is the key to a successful business. For the past 10 years SOFTWIN has established an indisputable reputation in exceeding the expectations of clients and partners, by constantly striving for better communications. Please do not hesitate to contact us regarding any issues or questions you might have

### 10.3.1. Web addresses

Sales department: <[sales@bitdefender.com](mailto:sales@bitdefender.com)>  
Technical support: <[support@bitdefender.com](mailto:support@bitdefender.com)>  
Documentation: <[documentation@bitdefender.com](mailto:documentation@bitdefender.com)>  
Partner Program: <[partners@bitdefender.com](mailto:partners@bitdefender.com)>  
Marketing: <[marketing@bitdefender.com](mailto:marketing@bitdefender.com)>  
Media Relations: <[pr@bitdefender.com](mailto:pr@bitdefender.com)>  
Job Opportunities: <[jobs@bitdefender.com](mailto:jobs@bitdefender.com)>  
Virus Submissions: <[virus\\_submission@bitdefender.com](mailto:virus_submission@bitdefender.com)>  
Spam Submissions: <[spam\\_submission@bitdefender.com](mailto:spam_submission@bitdefender.com)>  
Report Abuse: <[abuse@bitdefender.com](mailto:abuse@bitdefender.com)>  
Product web site: <http://www.bitdefender.com>  
Product ftp archives: <ftp://ftp.bitdefender.com/pub>  
Local distributors: [http://www.bitdefender.com/partner\\_list](http://www.bitdefender.com/partner_list)  
BitDefender Knowledge Base: <http://kb.bitdefender.com>



## 10.3.2. Address

The BitDefender offices are ready to respond to any inquiries regarding their areas of operations, in both commercial and general matters. Their respective addresses and contacts are listed below.

### Germany

**Softwin GmbH**

Karlsdorfer Straße 56 88069

Tett nang

Technischer Support: <[support@bitdefender.de](mailto:support@bitdefender.de)>

Vertrieb: <[vertrieb@bitdefender.de](mailto:vertrieb@bitdefender.de)>

Phone: 07542/94 44 44

Fax: 07542/94 44 99

Product web site: <http://www.bitdefender.de>

### Spain

**Constelación Negocial, S.L**

C/ Balmes 195, 2ª planta, 08006

Barcelona

Soporte técnico: <[soporte@bitdefender-es.com](mailto:soporte@bitdefender-es.com)>

Ventas: <[comercial@bitdefender-es.com](mailto:comercial@bitdefender-es.com)>

Phone: + 34 932189615

Fax: + 34 932179128

Sitio web del producto: <http://www.bitdefender-es.com>

### U.S.A

**BitDefender LLC**

6301 NW 5th Way, Suite 3500

Fort Lauderdale, Florida 33308

Technical support: <[support@bitdefender.us](mailto:support@bitdefender.us)>

Sales: <[sales@bitdefender.us](mailto:sales@bitdefender.us)>

Phone: 954 776 62 62, 800 388 80 62

Fax: 954 776 64 62, 800 388 80 64

Product web site: <http://www.bitdefender.us>

## Romania

### **SOFTWIN**

5th Fabrica de Glucoza St.

PO BOX 52-93

Bucharest

Technical support: <[suport@bitdefender.ro](mailto:suport@bitdefender.ro)>

Sales: <[sales@bitdefender.ro](mailto:sales@bitdefender.ro)>

Phone: +40 21 2330780

Fax: +40 21 2330763

Product web site: <http://www.bitdefender.ro>

# 11. Frequently Asked Questions

## 11.1. General

- Q: How can I tell if BitDefender is actually working?
- A: In the **General** module, access the [Status](#) section and look at the statistics.
- Q: What are the system requirements?
- A: You will find them in the *"System requirements"* (p. 3) section.
- Q: How do I uninstall BitDefender?
- A: The removing procedure is described in the *"Removing, repairing or modifying BitDefender features"* (p. 6) section.
- Q: How can I register BitDefender?
- A: The registration procedure is described in the *"Product registration"* (p. 27) section.

## 11.2. Antispyware

- Q: What is a quick scan?
- A: A quick scan is a scan process against spywares. Only the registry entries, cookies, processes and some specific files will be scanned.
- Q: What is the difference between quick scan and deep scan?
- A: The difference is that when you perform a deep scan, you can select to scan cookies, processes or registry, too.
- Q: What does [Dial Control](#) do?

- A: The **Dial Control** monitors all dialers attempting to access a computer modem, immediately warning the user and prompting him to choose whether to block or allow such operations.
- Q: What does [Script Control](#) do?
- A: The **Script Control** monitors all websites that are trying to activate a script or other active content. You will be in charge of which websites you trust and which you don't.
- Q: What does [Cookie Control](#) do?
- A: The **Cookie Control** ensures your privacy when you use the Internet.

### 11.3. Update

- Q: Why is it necessary to update BitDefender?
- A: Every time you perform an update new antispymware signatures will be added to the database.
- Q: How can I update BitDefender?
- A: By default, BitDefender will automatically update every hour. But you can also update manually or change the time interval for the automatic update in the [Update](#) module.

# Glossary

## ActiveX

ActiveX is a model for writing programs so that other programs and the operating system can call them. ActiveX technology is used with Microsoft Internet Explorer to make interactive Web pages that look and behave like computer programs, rather than static pages. With ActiveX, users can ask or answer questions, use push buttons, and interact in other ways with the Web page. ActiveX controls are often written using Visual Basic.

Active X is notable for a complete lack of security controls; computer security experts discourage its use over the Internet.

## Adware

Adware is often combined with a host application that is provided at no charge as long as the user agrees to accept the adware. Because adware applications are usually installed after the user has agreed to a licensing agreement that states the purpose of the application, no offense is committed.

However, pop-up advertisements can become an annoyance, and in some cases degrade system performance. Also, the information that some of these applications collect may cause privacy concerns for users who were not fully aware of the terms in the license agreement.

## Archive

A disk, tape, or directory that contains files that have been backed up.

A file that contains one or more files in a compressed format.

## Backdoor

A hole in the security of a system deliberately left in place by designers or maintainers. The motivation for such holes is not always sinister; some operating systems, for example, come out of the box with privileged accounts intended for

use by field service technicians or the vendor's maintenance programmers.

Boot sector	A sector at the beginning of each disk that identifies the disk's architecture (sector size, cluster size, and so on). For startup disks, the boot sector also contains a program that loads the operating system.
Boot virus	A virus that infects the boot sector of a fixed or floppy disk. An attempt to boot from a diskette infected with a boot sector virus will cause the virus to become active in memory. Every time you boot your system from that point on, you will have the virus active in memory.
Browser	Short for Web browser, a software application used to locate and display Web pages. The two most popular browsers are Netscape Navigator and Microsoft Internet Explorer. Both of these are graphical browsers, which means that they can display graphics as well as text. In addition, most modern browsers can present multimedia information, including sound and video, though they require plug-ins for some formats.
Command line	In a command line interface, the user types commands in the space provided directly on the screen using command language
Cookie	Within the Internet industry, cookies are described as small files containing information about individual computers that can be analyzed and used by advertisers to track your online interests and tastes. In this realm, cookie technology is still being developed and the intention is to target ads directly to what you've said your interests are. It's a double-edge sword for many people because on one hand, it's efficient and pertinent as you only see ads about what you're interested in. On the other hand, it involves actually "tracking" and "following" where you go and what you click. Understandably so, there is a debate over privacy and many people feel offended by the notion that they are viewed as a "SKU number" (you know, the bar code on the back of packages that gets scanned at the grocery check-out line). While this viewpoint may be extreme, in some cases it is accurate.

Disk drive	<p>It's a machine that reads data from and writes data onto a disk.</p> <p>A hard disk drive reads and writes hard disks.</p> <p>A floppy drive accesses floppy disks.</p> <p>Disk drives can be either internal (housed within a computer) or external (housed in a separate box that connects to the computer).</p>
Download	<p>To copy data (usually an entire file) from a main source to a peripheral device. The term is often used to describe the process of copying a file from an online service to one's own computer. Downloading can also refer to copying a file from a network file server to a computer on the network.</p>
E-mail	<p>Electronic mail. A service that sends messages on computers via local or global networks.</p>
Events	<p>An action or occurrence detected by a program. Events can be user actions, such as clicking a mouse button or pressing a key, or system occurrences, such as running out of memory.</p>
False positive	<p>Occurs when a scanner identifies a file as infected when in fact it is not.</p>
Filename extension	<p>The portion of a filename, following the final point, which indicates the kind of data stored in the file.</p> <p>:call CVScommit() Many operating systems use filename extensions, e.g. Unix, VMS, and MS-DOS. They are usually from one to three letters (some sad old OSes support no more than three). Examples include "c" for C source code, "ps" for PostScript, "txt" for arbitrary text.</p>
Heuristic	<p>A rule-based method of identifying new viruses. This method of scanning does not rely on specific virus signatures. The advantage of the heuristic scan is that it is not fooled by a new variant of an existing virus. However, it might occasion-</p>

ally report suspicious code in normal programs, generating the so-called "false positive".

- IP** Internet Protocol - A routable protocol in the TCP/IP protocol suite that is responsible for IP addressing, routing, and the fragmentation and reassembly of IP packets.
- Java applet** A Java program which is designed to run only on a web page. To use an applet on a web page, you would specify the name of the applet and the size (length and width, in pixels) that the applet can utilize. When the web page is accessed, the browser downloads the applet from a server and runs it on the user's machine (the client). Applets differ from applications in that they are governed by a strict security protocol.
- For example, even though applets run on the client, they cannot read or write data onto the client's machine. Additionally, applets are further restricted so that they can only read and write data from the same domain that they are served from.
- Macro virus** A type of computer virus that is encoded as a macro embedded in a document. Many applications, such as Microsoft Word and Excel, support powerful macro languages.
- These applications allow you to embed a macro in a document, and have the macro execute each time the document is opened.
- Mail client** An e-mail client is an application that enables you to send and receive e-mail.
- Memory** Internal storage areas in the computer. The term memory identifies data storage that comes in the form of chips, and the word storage is used for memory that exists on tapes or disks. Every computer comes with a certain amount of physical memory, usually referred to as main memory or RAM.
- Non-heuristic** This method of scanning relies on specific virus signatures. The advantage of the non-heuristic scan is that it is not fooled



by what might seem to be a virus, and does not generate false alarms.

Packed programs

A file in a compression format. Many operating systems and applications contain commands that enable you to pack a file so that it takes up less memory. For example, suppose you have a text file containing ten consecutive space characters. Normally, this would require ten bytes of storage.

However, a program that packs files would replace the space characters by a special space-series character followed by the number of spaces being replaced. In this case, the ten spaces would require only two bytes. This is just one packing technique - there are many more.

Path

The exact directions to a file on a computer. These directions are usually described by means of the hierarchical filing system from the top down.

The route between any two points, such as the communications channel between two computers.

Phishing

The act of sending an e-mail to a user falsely claiming to be an established legitimate enterprise in an attempt to scam the user into surrendering private information that will be used for identity theft. The e-mail directs the user to visit a Web site where they are asked to update personal information, such as passwords and credit card, social security, and bank account numbers, that the legitimate organization already has. The Web site, however, is bogus and set up only to steal the user's information.

Polymorphic virus

A virus that changes its form with each file it infects. Since they have no consistent binary pattern, such viruses are hard to identify.

Port

An interface on a computer to which you can connect a device. Personal computers have various types of ports. Internally, there are several ports for connecting disk drives, display screens, and keyboards. Externally, personal com-

puters have ports for connecting modems, printers, mice, and other peripheral devices.

In TCP/IP and UDP networks, an endpoint to a logical connection. The port number identifies what type of port it is. For example, port 80 is used for HTTP traffic.

**Report file**

A file that lists actions that have occurred. BitDefender maintains a report file listing the path scanned, the folders, the number of archives and files scanned, how many infected and suspicious files were found.

**Script**

Another term for macro or batch file, a script is a list of commands that can be executed without user interaction.

**Spam**

Electronic junk mail or junk newsgroup postings. Generally known as any unsolicited e-mail.

**Spyware**

Any software that covertly gathers user information through the user's Internet connection without his or her knowledge, usually for advertising purposes. Spyware applications are typically bundled as a hidden component of freeware or shareware programs that can be downloaded from the Internet; however, it should be noted that the majority of shareware and freeware applications do not come with spyware. Once installed, the spyware monitors user activity on the Internet and transmits that information in the background to someone else. Spyware can also gather information about e-mail addresses and even passwords and credit card numbers.

Spyware's similarity to a Trojan horse is the fact that users unwittingly install the product when they install something else. A common way to become a victim of spyware is to download certain peer-to-peer file swapping products that are available today.

Aside from the questions of ethics and privacy, spyware steals from the user by using the computer's memory resources and also by eating bandwidth as it sends information back to the spyware's home base via the user's Internet

connection. Because spyware is using memory and system resources, the applications running in the background can lead to system crashes or general system instability.

### Startup items

Any files placed in this folder will open when the computer starts. For example, a startup screen, a sound file to be played when the computer first starts, a reminder calendar, or application programs can be startup items. Normally, an alias of a file is placed in this folder rather than the file itself.

### System tray

Introduced with Windows 95, the system tray is located in the Windows taskbar (usually at the bottom next to the clock) and contains miniature icons for easy access to system functions such as fax, printer, modem, volume, and more. Double click or right click an icon to view and access the details and controls.

### TCP/IP

Transmission Control Protocol/Internet Protocol - A set of networking protocols widely used on the Internet that provides communications across interconnected networks of computers with diverse hardware architectures and various operating systems. TCP/IP includes standards for how computers communicate and conventions for connecting networks and routing traffic.

### Trojan

A destructive program that masquerades as a benign application. Unlike viruses, Trojan horses do not replicate themselves but they can be just as destructive. One of the most insidious types of Trojan horse is a program that claims to rid your computer of viruses but instead introduces viruses onto your computer.

The term comes from a story in Homer's Iliad, in which the Greeks give a giant wooden horse to their foes, the Trojans, ostensibly as a peace offering. But after the Trojans drag the horse inside their city walls, Greek soldiers sneak out of the horse's hollow belly and open the city gates, allowing their compatriots to pour in and capture Troy.

### Update

A new version of a software or hardware product designed to replace an older version of the same product. In addition,

the installation routines for updates often check to make sure that an older version is already installed on your computer; if not, you cannot install the update.

BitDefender has its own update module that allows you to manually check for updates, or let it automatically update the product.

### Virus

A program or piece of code that is loaded onto your computer without your knowledge and runs against your will. Most viruses can also replicate themselves. All computer viruses are manmade. A simple virus that can copy itself over and over again is relatively easy to produce. Even such a simple virus is dangerous because it will quickly use all available memory and bring the system to a halt. An even more dangerous type of virus is one capable of transmitting itself across networks and bypassing security systems.

### Virus definition

The binary pattern of a virus, used by the antivirus program to detect and eliminate the virus.

### Worm

A program that propagates itself over a network, reproducing itself as it goes. It cannot attach itself to other programs.